



# INTERNATIONAL GEMOLOGICAL INSTITUTE

## DIAMOND REPORT

July 29, 2025  
IGI Report Number **719527182**  
Description **NATURAL DIAMOND**  
Shape and Cutting Style **ROUND BRILLIANT**  
Measurements **5.76 - 5.79 X 3.61 MM**

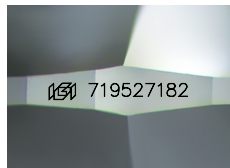
### GRADING RESULTS

Carat Weight **0.75 CARAT**  
Color Grade **E**  
Clarity Grade **SI 2**  
Cut Grade **EXCELLENT**

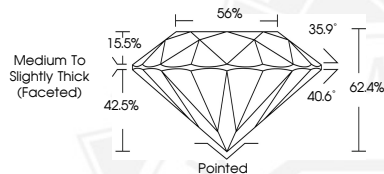
### ADDITIONAL GRADING INFORMATION

Polish **EXCELLENT**  
Symmetry **EXCELLENT**  
Fluorescence **VERY SLIGHT**  
Identification Features **FEATHER, CRYSTAL**  
Inscription(s) **IGI 719527182**  
Comments: IDEAL CUT ROUND BRILLIANT

ELECTRONIC COPY



Sample Image Used



July 29, 2025

IGI Report Number **719527182**

**ROUND BRILLIANT**

**NATURAL DIAMOND**

**5.76 - 5.79 X 3.61 MM**

Carat Weight **0.75 CARAT**

Color Grade **E**

Clarity Grade **SI 2**

Cut Grade **EXCELLENT**

Polish **EXCELLENT**

Symmetry **EXCELLENT**

Fluorescence **VERY SLIGHT**

Inscription(s) **IGI 719527182**

Comments: IDEAL CUT ROUND

**BRILLIANT**



July 29, 2025

IGI Report Number **719527182**

**ROUND BRILLIANT**

**NATURAL DIAMOND**

**5.76 - 5.79 X 3.61 MM**

Carat Weight **0.75 CARAT**

Color Grade **E**

Clarity Grade **SI 2**

Cut Grade **EXCELLENT**

Polish **EXCELLENT**

Symmetry **EXCELLENT**

Fluorescence **VERY SLIGHT**

Inscription(s) **IGI 719527182**

Comments: IDEAL CUT ROUND

**BRILLIANT**



THIS DOCUMENT WAS PRODUCED WITH THE FOLLOWING SECURITY MEASURES: SPECIAL DOCUMENT PAPER, INK SCREENS, WATERMARK, BACKGROUND DESIGNS, HOLOGRAM AND OTHER SECURITY FEATURES NOT LISTED AND DO EXCEED DOCUMENT SECURITY INDUSTRY GUIDELINES.

For terms & conditions and to verify this report, please visit [www.igi.org](http://www.igi.org)