



# INTERNATIONAL GEMOLOGICAL INSTITUTE

## DIAMOND REPORT

July 28, 2025  
IGI Report Number 719526921  
Description NATURAL DIAMOND  
Shape and Cutting Style ROUND BRILLIANT  
Measurements 4.40 - 4.44 X 2.81 MM

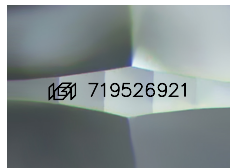
### GRADING RESULTS

Carat Weight 0.34 CARAT  
Color Grade K  
Clarity Grade SI 1  
Cut Grade EXCELLENT

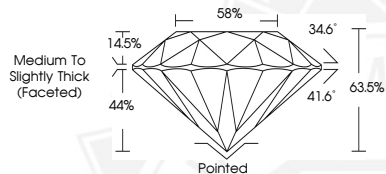
### ADDITIONAL GRADING INFORMATION

Polish EXCELLENT  
Symmetry EXCELLENT  
Fluorescence STRONG  
Identification Features CRYSTAL, FEATHER, CLOUD  
Inscription(s) IGI 719526921

ELECTRONIC COPY



Sample Image Used



July 28, 2025  
IGI Report Number 719526921  
ROUND BRILLIANT  
NATURAL DIAMOND  
4.40 - 4.44 X 2.81 MM  
Carat Weight 0.34 CARAT  
Color Grade K  
Clarity Grade SI 1  
Cut Grade EXCELLENT  
Polish EXCELLENT  
Symmetry EXCELLENT  
Fluorescence STRONG  
Inscription(s) IGI 719526921



July 28, 2025  
IGI Report Number 719526921  
ROUND BRILLIANT  
NATURAL DIAMOND  
4.40 - 4.44 X 2.81 MM  
Carat Weight 0.34 CARAT  
Color Grade K  
Clarity Grade SI 1  
Cut Grade EXCELLENT  
Polish EXCELLENT  
Symmetry EXCELLENT  
Fluorescence STRONG  
Inscription(s) IGI 719526921



THIS DOCUMENT WAS PRODUCED WITH THE FOLLOWING SECURITY MEASURES: SPECIAL DOCUMENT PAPER, INK SCREENS, WATERMARK, BACKGROUND DESIGNS, HOLOGRAM AND OTHER SECURITY FEATURES NOT LISTED AND DO EXCEED DOCUMENT SECURITY INDUSTRY GUIDELINES.

For terms & conditions and to verify this report, please visit [www.igi.org](http://www.igi.org)