



# INTERNATIONAL GEMOLOGICAL INSTITUTE

## DIAMOND REPORT

July 26, 2025  
IGI Report Number **719526542**  
Description **NATURAL DIAMOND**  
Shape and Cutting Style **ROUND BRILLIANT**  
Measurements **4.75 - 4.78 X 2.85 MM**

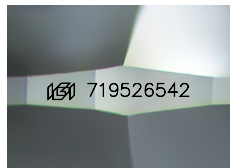
### GRADING RESULTS

Carat Weight **0.40 CARAT**  
Color Grade **F**  
Clarity Grade **SI 2**  
Cut Grade **EXCELLENT**

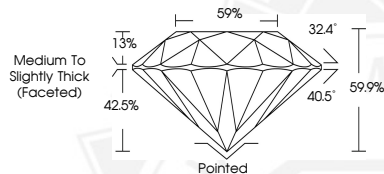
### ADDITIONAL GRADING INFORMATION

Polish **VERY GOOD**  
Symmetry **EXCELLENT**  
Fluorescence **SLIGHT**  
Identification Features **CRYSTAL, FEATHER, CLOUD**  
Inscription(s) **(IGI) 719526542**

ELECTRONIC COPY



Sample Image Used



July 26, 2025  
IGI Report Number **719526542**  
**ROUND BRILLIANT**  
**NATURAL DIAMOND**  
**4.75 - 4.78 X 2.85 MM**  
Carat Weight **0.40 CARAT**  
Color Grade **F**  
Clarity Grade **SI 2**  
Cut Grade **EXCELLENT**  
Polish **VERY GOOD**  
Symmetry **EXCELLENT**  
Fluorescence **SLIGHT**  
Inscription(s) **(IGI) 719526542**



July 26, 2025  
IGI Report Number **719526542**  
**ROUND BRILLIANT**  
**NATURAL DIAMOND**  
**4.75 - 4.78 X 2.85 MM**  
Carat Weight **0.40 CARAT**  
Color Grade **F**  
Clarity Grade **SI 2**  
Cut Grade **EXCELLENT**  
Polish **VERY GOOD**  
Symmetry **EXCELLENT**  
Fluorescence **SLIGHT**  
Inscription(s) **(IGI) 719526542**



THIS DOCUMENT WAS PRODUCED WITH THE FOLLOWING SECURITY MEASURES: SPECIAL DOCUMENT PAPER, INK SCREENS, WATERMARK, BACKGROUND DESIGNS, HOLOGRAM AND OTHER SECURITY FEATURES NOT LISTED AND DO EXCEED DOCUMENT SECURITY INDUSTRY GUIDELINES.

For terms & conditions and to verify this report, please visit [www.igi.org](http://www.igi.org)