



# INTERNATIONAL GEMOLOGICAL INSTITUTE

ELECTRONIC COPY

## DIAMOND REPORT

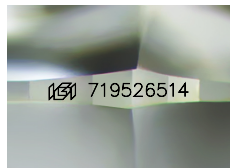
July 26, 2025  
IGI Report Number **719526514**  
Description **NATURAL DIAMOND**  
Shape and Cutting Style **ROUND BRILLIANT**  
Measurements **4.72 - 4.76 X 2.88 MM**

### GRADING RESULTS

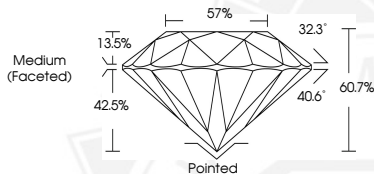
Carat Weight **0.40 CARAT**  
Color Grade **J**  
Clarity Grade **VS 2**  
Cut Grade **EXCELLENT**

### ADDITIONAL GRADING INFORMATION

Polish **EXCELLENT**  
Symmetry **VERY GOOD**  
Fluorescence **NONE**  
Identification Features **FEATHER, CAVITY**  
Inscription(s) **IGI 719526514**



Sample Image Used



July 26, 2025  
IGI Report Number **719526514**  
ROUND BRILLIANT  
NATURAL DIAMOND  
4.72 - 4.76 X 2.88 MM  
Carat Weight **0.40 CARAT**  
Color Grade **J**  
Clarity Grade **VS 2**  
Cut Grade **EXCELLENT**  
Polish **EXCELLENT**  
Symmetry **VERY GOOD**  
Fluorescence **NONE**  
Inscription(s) **IGI 719526514**



July 26, 2025  
IGI Report Number **719526514**  
ROUND BRILLIANT  
NATURAL DIAMOND  
4.72 - 4.76 X 2.88 MM  
Carat Weight **0.40 CARAT**  
Color Grade **J**  
Clarity Grade **VS 2**  
Cut Grade **EXCELLENT**  
Polish **EXCELLENT**  
Symmetry **VERY GOOD**  
Fluorescence **NONE**  
Inscription(s) **IGI 719526514**



THIS DOCUMENT WAS PRODUCED WITH THE FOLLOWING SECURITY MEASURES: SPECIAL DOCUMENT PAPER, INK SCREENS, WATERMARK, BACKGROUND DESIGNS, HOLOGRAM AND OTHER SECURITY FEATURES NOT LISTED AND DO EXCEED DOCUMENT SECURITY INDUSTRY GUIDELINES.

For terms & conditions and to verify this report, please visit [www.igi.org](http://www.igi.org)