



# INTERNATIONAL GEMOLOGICAL INSTITUTE

## DIAMOND REPORT

July 24, 2025  
IGI Report Number 719526321  
Description NATURAL DIAMOND  
Shape and Cutting Style ROUND BRILLIANT  
Measurements 5.15 - 5.18 X 3.15 MM

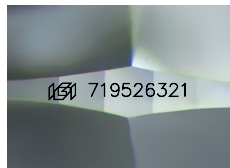
### GRADING RESULTS

Carat Weight 0.52 CARAT  
Color Grade I  
Clarity Grade SI 1  
Cut Grade EXCELLENT

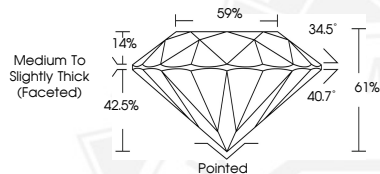
### ADDITIONAL GRADING INFORMATION

Polish EXCELLENT  
Symmetry EXCELLENT  
Fluorescence NONE  
Identification Features FEATHER, CRYSTAL  
Inscription(s) IGI 719526321  
Comments: IDEAL CUT ROUND BRILLIANT

ELECTRONIC COPY



Sample Image Used



THIS DOCUMENT WAS PRODUCED WITH THE FOLLOWING SECURITY MEASURES: SPECIAL DOCUMENT PAPER, INK SCREENS, WATERMARK, BACKGROUND DESIGNS, HOLOGRAM AND OTHER SECURITY FEATURES NOT LISTED AND DO EXCEED DOCUMENT SECURITY INDUSTRY GUIDELINES.

For terms & conditions and to verify this report, please visit [www.igi.org](http://www.igi.org)



July 24, 2025

IGI Report Number 719526321

ROUND BRILLIANT

NATURAL DIAMOND

5.15 - 5.18 X 3.15 MM

Carat Weight 0.52 CARAT

Color Grade I

Clarity Grade SI 1

Cut Grade EXCELLENT

Polish EXCELLENT

Symmetry EXCELLENT

Fluorescence NONE

Inscription(s) IGI 719526321

Comments: IDEAL CUT ROUND

BRILLIANT



July 24, 2025

IGI Report Number 719526321

ROUND BRILLIANT

NATURAL DIAMOND

5.15 - 5.18 X 3.15 MM

Carat Weight 0.52 CARAT

Color Grade I

Clarity Grade SI 1

Cut Grade EXCELLENT

Polish EXCELLENT

Symmetry EXCELLENT

Fluorescence NONE

Inscription(s) IGI 719526321

Comments: IDEAL CUT ROUND

BRILLIANT