



July 24, 2025

IGI Report Number 719526264

ROUND BRILLIANT

NATURAL DIAMOND

4.68 - 4.70 X 2.90 MM

Carat Weight 0.40 CARAT

Color Grade J

Clarity Grade VS 1

Cut Grade EXCELLENT

Polish EXCELLENT

Symmetry EXCELLENT

Fluorescence NONE

Inscription(s) IGI 719526264

Comments: IDEAL CUT ROUND

BRILLIANT

**DIAMOND REPORT**

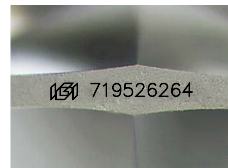
July 24, 2025  
IGI Report Number 719526264  
Description NATURAL DIAMOND  
Shape and Cutting Style ROUND BRILLIANT  
Measurements 4.68 - 4.70 X 2.90 MM

**GRADING RESULTS**

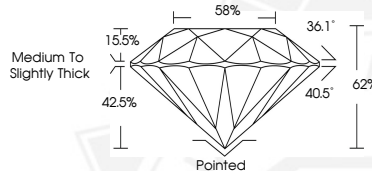
Carat Weight 0.40 CARAT  
Color Grade J  
Clarity Grade VS 1  
Cut Grade EXCELLENT

**ADDITIONAL GRADING INFORMATION**

Polish EXCELLENT  
Symmetry EXCELLENT  
Fluorescence NONE  
Identification Features FEATHER, CRYSTAL CLOUD  
Inscription(s) IGI 719526264  
Comments: IDEAL CUT ROUND BRILLIANT



Sample Image Used



July 24, 2025

IGI Report Number 719526264

ROUND BRILLIANT

NATURAL DIAMOND

4.68 - 4.70 X 2.90 MM

Carat Weight 0.40 CARAT

Color Grade J

Clarity Grade VS 1

Cut Grade EXCELLENT

Polish EXCELLENT

Symmetry EXCELLENT

Fluorescence NONE

Inscription(s) IGI 719526264

Comments: IDEAL CUT ROUND

BRILLIANT



THIS DOCUMENT WAS PRODUCED WITH THE FOLLOWING SECURITY MEASURES: SPECIAL DOCUMENT PAPER, INK SCREENS, WATERMARK, BACKGROUND DESIGNS, HOLOGRAM AND OTHER SECURITY FEATURES NOT LISTED AND DO EXCEED DOCUMENT SECURITY INDUSTRY GUIDELINES.