



INTERNATIONAL GEMOLOGICAL INSTITUTE

DIAMOND REPORT

July 24, 2025
IGI Report Number **719526001**
Description **NATURAL DIAMOND**
Shape and Cutting Style **ROUND BRILLIANT**
Measurements **4.68 - 4.71 X 2.98 MM**

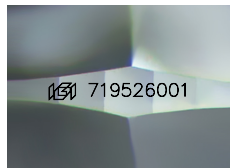
GRADING RESULTS

Carat Weight **0.40 CARAT**
Color Grade **I**
Clarity Grade **SI 1**
Cut Grade **EXCELLENT**

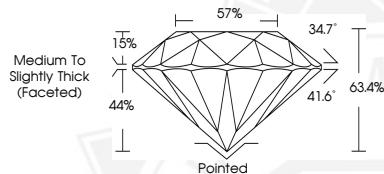
ADDITIONAL GRADING INFORMATION

Polish **EXCELLENT**
Symmetry **EXCELLENT**
Fluorescence **NONE**
Identification Features **FEATHER, CRYSTAL**
Inscription(s) **(IGI) 719526001**

ELECTRONIC COPY



Sample Image Used



July 24, 2025
IGI Report Number **719526001**
ROUND BRILLIANT
NATURAL DIAMOND
4.68 - 4.71 X 2.98 MM
Carat Weight **0.40 CARAT**
Color Grade **I**
Clarity Grade **SI 1**
Cut Grade **EXCELLENT**
Polish **EXCELLENT**
Symmetry **EXCELLENT**
Fluorescence **NONE**
Inscription(s) **(IGI) 719526001**



July 24, 2025
IGI Report Number **719526001**
ROUND BRILLIANT
NATURAL DIAMOND
4.68 - 4.71 X 2.98 MM
Carat Weight **0.40 CARAT**
Color Grade **I**
Clarity Grade **SI 1**
Cut Grade **EXCELLENT**
Polish **EXCELLENT**
Symmetry **EXCELLENT**
Fluorescence **NONE**
Inscription(s) **(IGI) 719526001**



THIS DOCUMENT WAS PRODUCED WITH THE FOLLOWING SECURITY MEASURES: SPECIAL DOCUMENT PAPER, INK SCREENS, WATERMARK, BACKGROUND DESIGNS, HOLOGRAM AND OTHER SECURITY FEATURES NOT LISTED AND DO EXCEED DOCUMENT SECURITY INDUSTRY GUIDELINES.

For terms & conditions and to verify this report, please visit www.igi.org