



July 21, 2025

IGI Report Number 719525753

**ROUND BRILLIANT
NATURAL DIAMOND**
4.65 - 4.69 X 2.95 MM

Carat Weight **0.40 CARAT**
Color Grade **J**
Clarity Grade **SI 1**
Cut Grade **EXCELLENT**
Polish **EXCELLENT**
Symmetry **EXCELLENT**
Fluorescence **NONE**
Inscription(s) **IGI 719525753**

DIAMOND REPORT

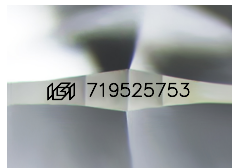
July 21, 2025 **719525753**
IGI Report Number
Description **NATURAL DIAMOND**
Shape and Cutting Style **ROUND BRILLIANT**
Measurements **4.65 - 4.69 X 2.95 MM**

GRADING RESULTS

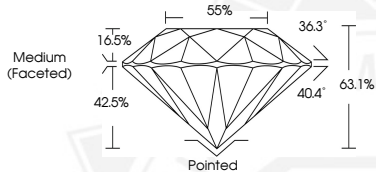
Carat Weight **0.40 CARAT**
Color Grade **J**
Clarity Grade **SI 1**
Cut Grade **EXCELLENT**

ADDITIONAL GRADING INFORMATION

Polish **EXCELLENT**
Symmetry **EXCELLENT**
Fluorescence **NONE**
Identification Features **FEATHER, CLOUD**
Inscription(s) **IGI 719525753**



Sample Image Used



July 21, 2025

IGI Report Number 719525753

**ROUND BRILLIANT
NATURAL DIAMOND**
4.65 - 4.69 X 2.95 MM

Carat Weight **0.40 CARAT**
Color Grade **J**
Clarity Grade **SI 1**
Cut Grade **EXCELLENT**
Polish **EXCELLENT**
Symmetry **EXCELLENT**
Fluorescence **NONE**
Inscription(s) **IGI 719525753**



THIS DOCUMENT WAS PRODUCED WITH THE FOLLOWING SECURITY MEASURES: SPECIAL DOCUMENT PAPER, INK SCREENS, WATERMARK, BACKGROUND DESIGNS, HOLOGRAM AND OTHER SECURITY FEATURES NOT LISTED AND DO EXCEED DOCUMENT SECURITY INDUSTRY GUIDELINES.