



# INTERNATIONAL GEMOLOGICAL INSTITUTE

ELECTRONIC COPY

## DIAMOND REPORT

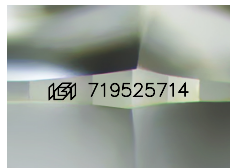
July 21, 2025  
IGI Report Number **719525714**  
Description **NATURAL DIAMOND**  
Shape and Cutting Style **ROUND BRILLIANT**  
Measurements **4.68 - 4.72 X 2.88 MM**

### GRADING RESULTS

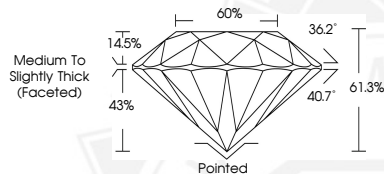
Carat Weight **0.40 CARAT**  
Color Grade **G**  
Clarity Grade **SI 2**  
Cut Grade **EXCELLENT**

### ADDITIONAL GRADING INFORMATION

Polish **EXCELLENT**  
Symmetry **EXCELLENT**  
Fluorescence **NONE**  
Identification Features **CRYSTAL, FEATHER, CLOUD**  
Inscription(s) **IGI 719525714**  
Comments: IDEAL CUT ROUND BRILLIANT



Sample Image Used



July 21, 2025

IGI Report Number **719525714**

**ROUND BRILLIANT**

**NATURAL DIAMOND**

**4.68 - 4.72 X 2.88 MM**

Carat Weight **0.40 CARAT**

Color Grade **G**

Clarity Grade **SI 2**

Cut Grade **EXCELLENT**

Polish **EXCELLENT**

Symmetry **EXCELLENT**

Fluorescence **NONE**

Inscription(s) **IGI 719525714**

Comments: IDEAL CUT ROUND

**BRILLIANT**



July 21, 2025

IGI Report Number **719525714**

**ROUND BRILLIANT**

**NATURAL DIAMOND**

**4.68 - 4.72 X 2.88 MM**

Carat Weight **0.40 CARAT**

Color Grade **G**

Clarity Grade **SI 2**

Cut Grade **EXCELLENT**

Polish **EXCELLENT**

Symmetry **EXCELLENT**

Fluorescence **NONE**

Inscription(s) **IGI 719525714**

Comments: IDEAL CUT ROUND

**BRILLIANT**



THIS DOCUMENT WAS PRODUCED WITH THE FOLLOWING SECURITY MEASURES: SPECIAL DOCUMENT PAPER, INK SCREENS, WATERMARK, BACKGROUND DESIGNS, HOLOGRAM AND OTHER SECURITY FEATURES NOT LISTED AND DO EXCEED DOCUMENT SECURITY INDUSTRY GUIDELINES.

For terms & conditions and to verify this report, please visit [www.igi.org](http://www.igi.org)