



DIAMOND REPORT

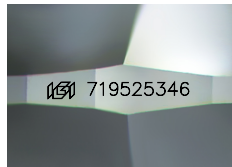
July 19, 2025
IGI Report Number **719525346**
Description **NATURAL DIAMOND**
Shape and Cutting Style **ROUND BRILLIANT**
Measurements **4.65 - 4.68 X 2.94 MM**

GRADING RESULTS

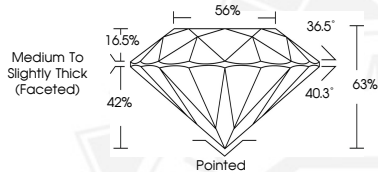
Carat Weight **0.40 CARAT**
Color Grade **I**
Clarity Grade **SI 2**
Cut Grade **EXCELLENT**

ADDITIONAL GRADING INFORMATION

Polish **EXCELLENT**
Symmetry **EXCELLENT**
Fluorescence **NONE**
Identification Features **FEATHER, CRYSTAL, CLOUD, CAVITY**
Inscription(s) **IGI 719525346**



Sample Image Used



July 19, 2025
IGI Report Number **719525346**
ROUND BRILLIANT
NATURAL DIAMOND
4.65 - 4.68 X 2.94 MM
Carat Weight **0.40 CARAT**
Color Grade **I**
Clarity Grade **SI 2**
Cut Grade **EXCELLENT**
Polish **EXCELLENT**
Symmetry **EXCELLENT**
Fluorescence **NONE**
Inscription(s) **IGI 719525346**



July 19, 2025
IGI Report Number **719525346**
ROUND BRILLIANT
NATURAL DIAMOND
4.65 - 4.68 X 2.94 MM
Carat Weight **0.40 CARAT**
Color Grade **I**
Clarity Grade **SI 2**
Cut Grade **EXCELLENT**
Polish **EXCELLENT**
Symmetry **EXCELLENT**
Fluorescence **NONE**
Inscription(s) **IGI 719525346**



THIS DOCUMENT WAS PRODUCED WITH THE FOLLOWING SECURITY MEASURES: SPECIAL DOCUMENT PAPER, INK SCREENS, WATERMARK, BACKGROUND DESIGNS, HOLOGRAM AND OTHER SECURITY FEATURES NOT LISTED AND DO EXCEED DOCUMENT SECURITY INDUSTRY GUIDELINES.