



# INTERNATIONAL GEMOLOGICAL INSTITUTE

## DIAMOND REPORT

July 14, 2025  
IGI Report Number **719524352**  
Description **NATURAL DIAMOND**  
Shape and Cutting Style **ROUND BRILLIANT**  
Measurements **5.69 - 5.71 X 3.58 MM**

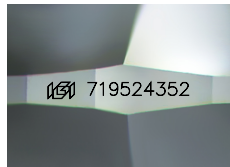
### GRADING RESULTS

Carat Weight **0.72 CARAT**  
Color Grade **H**  
Clarity Grade **I1**  
Cut Grade **EXCELLENT**

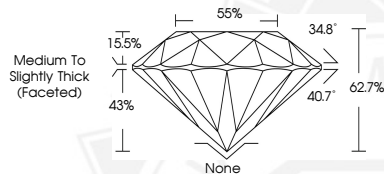
### ADDITIONAL GRADING INFORMATION

Polish **EXCELLENT**  
Symmetry **EXCELLENT**  
Fluorescence **NONE**  
Identification Features **FEATHER, CAVITY**  
Inscription(s) **IGI 719524352**

ELECTRONIC COPY



Sample Image Used



THIS DOCUMENT WAS PRODUCED WITH THE FOLLOWING SECURITY MEASURES: SPECIAL DOCUMENT PAPER, INK SCREENS, WATERMARK, BACKGROUND DESIGNS, HOLOGRAM AND OTHER SECURITY FEATURES NOT LISTED AND DO EXCEED DOCUMENT SECURITY INDUSTRY GUIDELINES.

For terms & conditions and to verify this report, please visit [www.igi.org](http://www.igi.org)



July 14, 2025  
IGI Report Number **719524352**  
ROUND BRILLIANT  
NATURAL DIAMOND  
5.69 - 5.71 X 3.58 MM  
Carat Weight **0.72 CARAT**  
Color Grade **H**  
Clarity Grade **I1**  
Cut Grade **EXCELLENT**  
Polish **EXCELLENT**  
Symmetry **EXCELLENT**  
Fluorescence **NONE**  
Inscription(s) **IGI 719524352**



July 14, 2025  
IGI Report Number **719524352**  
ROUND BRILLIANT  
NATURAL DIAMOND  
5.69 - 5.71 X 3.58 MM  
Carat Weight **0.72 CARAT**  
Color Grade **H**  
Clarity Grade **I1**  
Cut Grade **EXCELLENT**  
Polish **EXCELLENT**  
Symmetry **EXCELLENT**  
Fluorescence **NONE**  
Inscription(s) **IGI 719524352**