



INTERNATIONAL GEMOLOGICAL INSTITUTE

DIAMOND REPORT

July 12, 2025
IGI Report Number 719524349
Description NATURAL DIAMOND
Shape and Cutting Style ROUND BRILLIANT
Measurements 5.11 - 5.13 X 3.15 MM

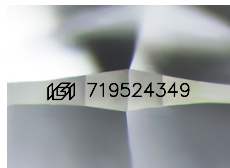
GRADING RESULTS

Carat Weight 0.51 CARAT
Color Grade I
Clarity Grade SI 2
Cut Grade EXCELLENT

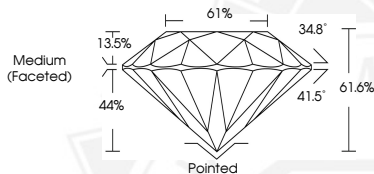
ADDITIONAL GRADING INFORMATION

Polish EXCELLENT
Symmetry EXCELLENT
Fluorescence NONE
Identification Features FEATHER, NEEDLE, CAVITY
Inscription(s) IGI 719524349

ELECTRONIC COPY



Sample Image Used



THIS DOCUMENT WAS PRODUCED WITH THE FOLLOWING SECURITY MEASURES: SPECIAL DOCUMENT PAPER, INK SCREENS, WATERMARK, BACKGROUND DESIGNS, HOLOGRAM AND OTHER SECURITY FEATURES NOT LISTED AND DO EXCEED DOCUMENT SECURITY INDUSTRY GUIDELINES.

For terms & conditions and to verify this report, please visit www.igi.org



July 12, 2025
IGI Report Number 719524349
ROUND BRILLIANT
NATURAL DIAMOND
5.11 - 5.13 X 3.15 MM
Carat Weight 0.51 CARAT
Color Grade I
Clarity Grade SI 2
Cut Grade EXCELLENT
Polish EXCELLENT
Symmetry EXCELLENT
Fluorescence NONE
Inscription(s) IGI 719524349



July 12, 2025
IGI Report Number 719524349
ROUND BRILLIANT
NATURAL DIAMOND
5.11 - 5.13 X 3.15 MM
Carat Weight 0.51 CARAT
Color Grade I
Clarity Grade SI 2
Cut Grade EXCELLENT
Polish EXCELLENT
Symmetry EXCELLENT
Fluorescence NONE
Inscription(s) IGI 719524349