



INTERNATIONAL GEMOLOGICAL INSTITUTE

DIAMOND REPORT

July 12, 2025
IGI Report Number **719524339**
Description **NATURAL DIAMOND**
Shape and Cutting Style **ROUND BRILLIANT**
Measurements **4.73 - 4.76 X 2.84 MM**

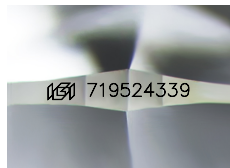
GRADING RESULTS

Carat Weight **0.40 CARAT**
Color Grade **J**
Clarity Grade **SI 2**
Cut Grade **EXCELLENT**

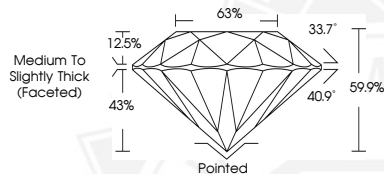
ADDITIONAL GRADING INFORMATION

Polish **EXCELLENT**
Symmetry **EXCELLENT**
Fluorescence **NONE**
Identification Features **FEATHER, CAVITY**
Inscription(s) **IGI 719524339**

ELECTRONIC COPY



Sample Image Used



THIS DOCUMENT WAS PRODUCED WITH THE FOLLOWING SECURITY MEASURES: SPECIAL DOCUMENT PAPER, INK SCREENS, WATERMARK, BACKGROUND DESIGNS, HOLOGRAM AND OTHER SECURITY FEATURES NOT LISTED AND DO EXCEED DOCUMENT SECURITY INDUSTRY GUIDELINES.

For terms & conditions and to verify this report, please visit www.igi.org



July 12, 2025
IGI Report Number **719524339**
ROUND BRILLIANT
NATURAL DIAMOND
4.73 - 4.76 X 2.84 MM
Carat Weight **0.40 CARAT**
Color Grade **J**
Clarity Grade **SI 2**
Cut Grade **EXCELLENT**
Polish **EXCELLENT**
Symmetry **EXCELLENT**
Fluorescence **NONE**
Inscription(s) **IGI 719524339**



July 12, 2025
IGI Report Number **719524339**
ROUND BRILLIANT
NATURAL DIAMOND
4.73 - 4.76 X 2.84 MM
Carat Weight **0.40 CARAT**
Color Grade **J**
Clarity Grade **SI 2**
Cut Grade **EXCELLENT**
Polish **EXCELLENT**
Symmetry **EXCELLENT**
Fluorescence **NONE**
Inscription(s) **IGI 719524339**