



INTERNATIONAL GEMOLOGICAL INSTITUTE

ELECTRONIC COPY

DIAMOND REPORT

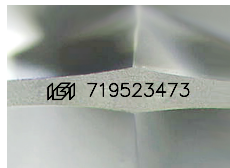
July 24, 2025
IGI Report Number **719523473**
Description **NATURAL DIAMOND**
Shape and Cutting Style **ROUND BRILLIANT**
Measurements **5.64 - 5.67 X 3.51 MM**

GRADING RESULTS

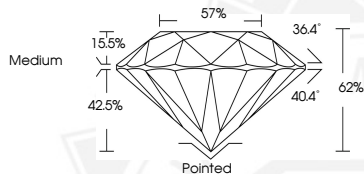
Carat Weight **0.70 CARAT**
Color Grade **K**
Clarity Grade **SI 1**
Cut Grade **EXCELLENT**

ADDITIONAL GRADING INFORMATION

Polish **EXCELLENT**
Symmetry **EXCELLENT**
Fluorescence **NONE**
Identification Features **CLOUD, CRYSTAL, FEATHER**
Inscription(s) **IGI 719523473**



Sample Image Used



July 24, 2025
IGI Report Number **719523473**
ROUND BRILLIANT
NATURAL DIAMOND
5.64 - 5.67 X 3.51 MM
Carat Weight **0.70 CARAT**
Color Grade **K**
Clarity Grade **SI 1**
Cut Grade **EXCELLENT**
Polish **EXCELLENT**
Symmetry **EXCELLENT**
Fluorescence **NONE**
Inscription(s) **IGI 719523473**



July 24, 2025
IGI Report Number **719523473**
ROUND BRILLIANT
NATURAL DIAMOND
5.64 - 5.67 X 3.51 MM
Carat Weight **0.70 CARAT**
Color Grade **K**
Clarity Grade **SI 1**
Cut Grade **EXCELLENT**
Polish **EXCELLENT**
Symmetry **EXCELLENT**
Fluorescence **NONE**
Inscription(s) **IGI 719523473**



THIS DOCUMENT WAS PRODUCED WITH THE FOLLOWING SECURITY MEASURES: SPECIAL DOCUMENT PAPER, INK SCREENS, WATERMARK, BACKGROUND DESIGNS, HOLOGRAM AND OTHER SECURITY FEATURES NOT LISTED AND DO EXCEED DOCUMENT SECURITY INDUSTRY GUIDELINES.

For terms & conditions and to verify this report, please visit www.igi.org