



INTERNATIONAL GEMOLOGICAL INSTITUTE

DIAMOND REPORT

July 4, 2025
IGI Report Number **719523441**
Description **NATURAL DIAMOND**
Shape and Cutting Style **ROUND BRILLIANT**
Measurements **5.23 - 5.26 X 3.32 MM**

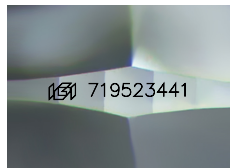
GRADING RESULTS

Carat Weight **0.57 CARAT**
Color Grade **G**
Clarity Grade **VS 2**
Cut Grade **EXCELLENT**

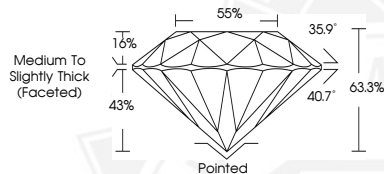
ADDITIONAL GRADING INFORMATION

Polish **EXCELLENT**
Symmetry **EXCELLENT**
Fluorescence **NONE**
Identification Features **CRYSTAL, FEATHER, CLOUD**
Inscription(s) **(IGI) 719523441**

ELECTRONIC COPY



Sample Image Used



THIS DOCUMENT WAS PRODUCED WITH THE FOLLOWING SECURITY MEASURES: SPECIAL DOCUMENT PAPER, INK SCREENS, WATERMARK, BACKGROUND DESIGNS, HOLOGRAM AND OTHER SECURITY FEATURES NOT LISTED AND DO EXCEED DOCUMENT SECURITY INDUSTRY GUIDELINES.

For terms & conditions and to verify this report, please visit www.igi.org



July 4, 2025
IGI Report Number **719523441**
ROUND BRILLIANT
NATURAL DIAMOND
5.23 - 5.26 X 3.32 MM
Carat Weight **0.57 CARAT**
Color Grade **G**
Clarity Grade **VS 2**
Cut Grade **EXCELLENT**
Polish **EXCELLENT**
Symmetry **EXCELLENT**
Fluorescence **NONE**
Inscription(s) **(IGI) 719523441**



July 4, 2025
IGI Report Number **719523441**
ROUND BRILLIANT
NATURAL DIAMOND
5.23 - 5.26 X 3.32 MM
Carat Weight **0.57 CARAT**
Color Grade **G**
Clarity Grade **VS 2**
Cut Grade **EXCELLENT**
Polish **EXCELLENT**
Symmetry **EXCELLENT**
Fluorescence **NONE**
Inscription(s) **(IGI) 719523441**