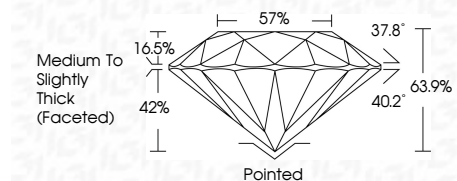




July 14, 2025  
IGI Report Number **719513471**  
Description **NATURAL DIAMOND**  
Shape and Cutting Style **ROUND BRILLIANT**  
Measurements **4.22 - 4.28 X 2.72 MM**

**GRADING RESULTS**

Carat Weight **0.31 CARAT**  
Color Grade **FANCY VIVID PURPLISH PINK,  
TREATED COLOR**  
Clarity Grade **VS 1**  
Cut Grade **VERY GOOD**



**ADDITIONAL GRADING INFORMATION**

Polish **EXCELLENT**  
Symmetry **VERY GOOD**  
Fluorescence **VERY SLIGHT**  
Inscription(s) **IGI 719513471  
TREATED**



**IGI**

July 14, 2025  
IGI Report No 719513471  
**ROUND BRILLIANT**  
4.22 - 4.28 X 2.72 MM  
0.31 CARAT  
FANCY VIVID PURPLISH PINK TREATED COLOR  
VS 1  
VERY GOOD  
63.9%  
57%  
Medium To Slightly Thick (Faceted)  
Pointed  
EXCELLENT  
VERY GOOD  
VERY SLIGHT  
IGI 719513471 TREATED

**ELECTRONIC COPY**

**DIAMOND REPORT**

July 14, 2025  
IGI Report Number **719513471**  
Description **NATURAL DIAMOND**  
Shape and Cutting Style **ROUND BRILLIANT**  
Measurements **4.22 - 4.28 X 2.72 MM**

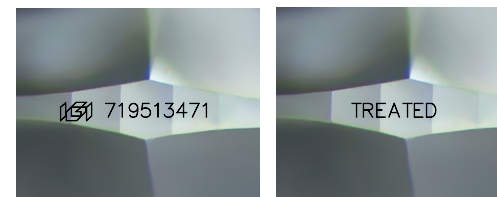
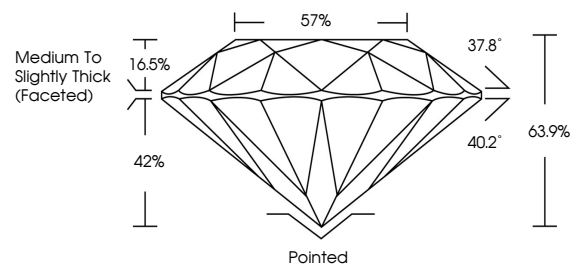
**GRADING RESULTS**

Carat Weight **0.31 CARAT**  
Color Grade **FANCY VIVID PURPLISH PINK,  
TREATED COLOR**  
Clarity Grade **VS 1**  
Cut Grade **VERY GOOD**

**ADDITIONAL GRADING INFORMATION**

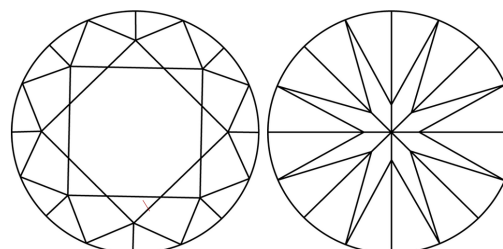
Polish **EXCELLENT**  
Symmetry **VERY GOOD**  
Fluorescence **VERY SLIGHT**  
Inscription(s) **IGI 719513471  
TREATED**

**PROPORTIONS**



Sample Images Used

**CLARITY CHARACTERISTICS**



**KEY TO SYMBOLS**

Red symbols indicate internal characteristics.  
Green symbols indicate external characteristics.

**COLOR**

D - F	G - J	K - M	N - R	S - Z	FANCY
Colorless	Near Colorless	Slightly Tinted	Very Light Color	Light Color	

**CLARITY**

IF	VVS <sup>1-2</sup>	VS <sup>1-2</sup>	SI <sup>1-2</sup>	I <sup>1-3</sup>
Internally Flawless	Very Very Slightly Included	Very Slightly Included	Slightly Included	Included

