



ELECTRONIC COPY

717571183
Report verification at igi.org

DIAMOND REPORT

July 11, 2025
IGI Report Number **717571183**
Description **NATURAL DIAMOND**
Shape and Cutting Style **ROUND BRILLIANT**
Measurements **6.33 - 6.39 X 3.89 MM**

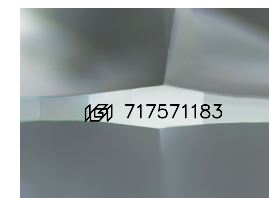
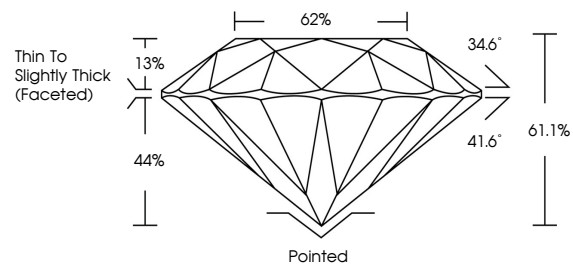
GRADING RESULTS

Carat Weight **0.97 CARAT**
Color Grade **E**
Clarity Grade **SI 2**
Cut Grade **EXCELLENT**

ADDITIONAL GRADING INFORMATION

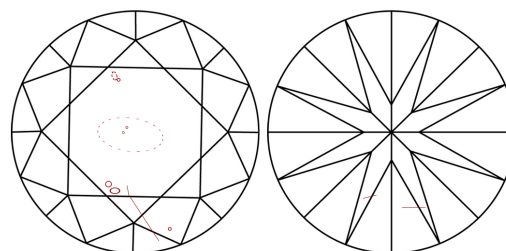
Polish **EXCELLENT**
Symmetry **EXCELLENT**
Fluorescence **VERY SLIGHT**
Inscription(s) **717571183**

PROPORTIONS



Sample Image Used

CLARITY CHARACTERISTICS



KEY TO SYMBOLS

Red symbols indicate internal characteristics.
Green symbols indicate external characteristics.

COLOR

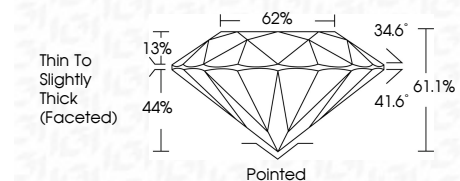
D - F	G - J	K - M	N - R	S - Z	FANCY
Colorless	Near Colorless	Slightly Tinted	Very Light Color	Light Color	

CLARITY

IF	VVS ¹⁻²	VS ¹⁻²	SI ¹⁻²	I ¹⁻³
Internally Flawless	Very Very Slightly Included	Very Slightly Included	Slightly Included	Included



July 11, 2025
IGI Report Number **717571183**
Description **NATURAL DIAMOND**
Shape and Cutting Style **ROUND BRILLIANT**
Measurements **6.33 - 6.39 X 3.89 MM**
GRADING RESULTS
Carat Weight **0.97 CARAT**
Color Grade **E**
Clarity Grade **SI 2**
Cut Grade **EXCELLENT**



ADDITIONAL GRADING INFORMATION

Polish **EXCELLENT**
Symmetry **EXCELLENT**
Fluorescence **VERY SLIGHT**
Inscription(s) **717571183**



IGI



July 11, 2025
IGI Report No 717571183
ROUND BRILLIANT
6.33 - 6.39 X 3.89 MM
0.97 CARAT
E
SI 2
EXCELLENT
61.1%
62%
Thin To Slightly Thick (Faceted)
Pointed
EXCELLENT
EXCELLENT
VERY SLIGHT
EXCELLENT
717571183