



ELECTRONIC COPY

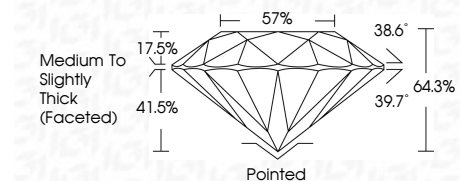
717551422
Report verification at igi.org



July 1, 2025
IGI Report Number **717551422**
Description **NATURAL DIAMOND**
Shape and Cutting Style **ROUND BRILLIANT**
Measurements **6.18 - 6.24 X 4.00 MM**

GRADING RESULTS

Carat Weight **1.01 CARAT**
Color Grade **J**
Clarity Grade **SI 1**
Cut Grade **VERY GOOD**



ADDITIONAL GRADING INFORMATION

Polish **VERY GOOD**
Symmetry **VERY GOOD**
Fluorescence **SLIGHT**
Inscription(s) **(IGI) 717551422**



IGI

July 1, 2025
IGI Report No 717551422
ROUND BRILLIANT
6.18 - 6.24 X 4.00 MM
1.01 CARAT J
Color Grade **VERY GOOD**
Clarity Grade **SI 1**
Depth **64.3%**
Table **57%**
Girdle **Medium To Slightly Thick (Faceted)**
Culet **Pointed**
Polish **VERY GOOD**
Symmetry **VERY GOOD**
Fluorescence **SLIGHT**
Inscription(s) **(IGI) 717551422**

DIAMOND REPORT

July 1, 2025
IGI Report Number **717551422**
Description **NATURAL DIAMOND**
Shape and Cutting Style **ROUND BRILLIANT**
Measurements **6.18 - 6.24 X 4.00 MM**

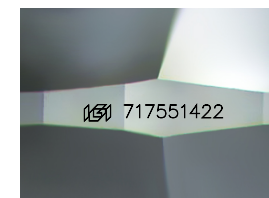
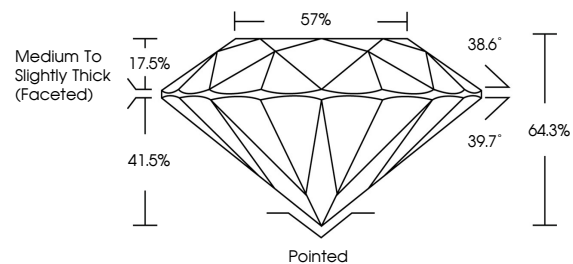
GRADING RESULTS

Carat Weight **1.01 CARAT**
Color Grade **J**
Clarity Grade **SI 1**
Cut Grade **VERY GOOD**

ADDITIONAL GRADING INFORMATION

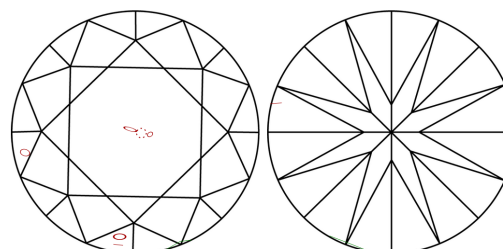
Polish **VERY GOOD**
Symmetry **VERY GOOD**
Fluorescence **SLIGHT**
Inscription(s) **(IGI) 717551422**

PROPORTIONS



Sample Image Used

CLARITY CHARACTERISTICS



KEY TO SYMBOLS

Red symbols indicate internal characteristics.
Green symbols indicate external characteristics.

COLOR

D - F	G - J	K - M	N - R	S - Z	FANCY
Colorless	Near Colorless	Slightly Tinted	Very Light Color	Light Color	

CLARITY

IF	VVS ¹⁻²	VS ¹⁻²	SI ¹⁻²	I ¹⁻³
Internally Flawless	Very Very Slightly Included	Very Slightly Included	Slightly Included	Included

