



ELECTRONIC COPY

715592198
Report verification at igi.org

DIAMOND REPORT

June 25, 2025
IGI Report Number **715592198**
Description **NATURAL DIAMOND**
Shape and Cutting Style **ROUND BRILLIANT**
Measurements **12.78 - 12.87 X 7.71 MM**

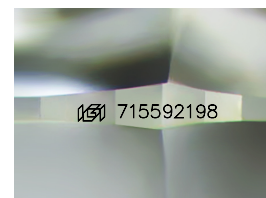
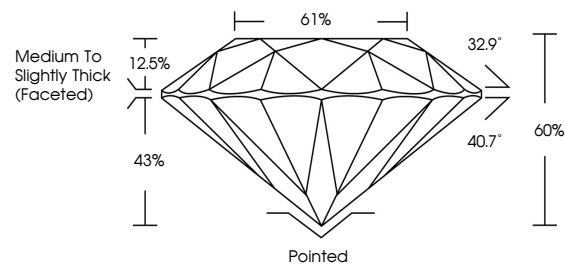
GRADING RESULTS

Carat Weight **8.01 CARATS**
Color Grade **I**
Clarity Grade **VS 1**
Cut Grade **EXCELLENT**

ADDITIONAL GRADING INFORMATION

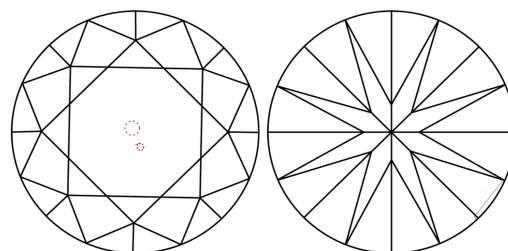
Polish **EXCELLENT**
Symmetry **EXCELLENT**
Fluorescence **NONE**
Inscription(s) **715592198**

PROPORTIONS



Sample Image Used

CLARITY CHARACTERISTICS



KEY TO SYMBOLS

Red symbols indicate internal characteristics.
Green symbols indicate external characteristics.

COLOR

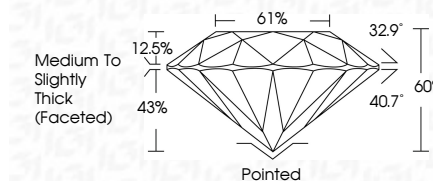
D - F	G - J	K - M	N - R	S - Z	FANCY
Colorless	Near Colorless	Slightly Tinted	Very Light Color	Light Color	

CLARITY

IF	VVS ¹⁻²	VS ¹⁻²	SI ¹⁻²	I ¹⁻³
Internally Flawless	Very Very Slightly Included	Very Slightly Included	Slightly Included	Included



June 25, 2025
IGI Report Number **715592198**
Description **NATURAL DIAMOND**
Shape and Cutting Style **ROUND BRILLIANT**
Measurements **12.78 - 12.87 X 7.71 MM**
GRADING RESULTS
Carat Weight **8.01 CARATS**
Color Grade **I**
Clarity Grade **VS 1**
Cut Grade **EXCELLENT**



ADDITIONAL GRADING INFORMATION

Polish **EXCELLENT**
Symmetry **EXCELLENT**
Fluorescence **NONE**
Inscription(s) **715592198**



IGI



June 25, 2025
IGI Report No 715592198
ROUND BRILLIANT
12.78 - 12.87 X 7.71 MM
8.01 CARATS
I
VS 1
EXCELLENT
61%
61%
Medium To Slightly Thick (Faceted)
Pointed
EXCELLENT
EXCELLENT
NONE
IGI 715592198