



**ELECTRONIC COPY**

715586971  
Report verification at [igi.org](http://igi.org)



July 14, 2025  
IGI Report Number **715586971**  
Description **NATURAL DIAMOND**  
Shape and Cutting Style **ROUND BRILLIANT**  
Measurements **10.09 - 10.14 X 6.34 MM**

**GRADING RESULTS**

Carat Weight **4.04 CARATS**  
Color Grade **H**  
Clarity Grade **SI 2**  
Cut Grade **EXCELLENT**

**DIAMOND REPORT**

July 14, 2025  
IGI Report Number **715586971**  
Description **NATURAL DIAMOND**  
Shape and Cutting Style **ROUND BRILLIANT**  
Measurements **10.09 - 10.14 X 6.34 MM**

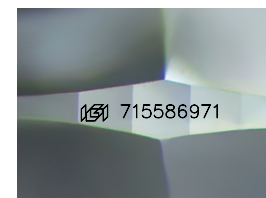
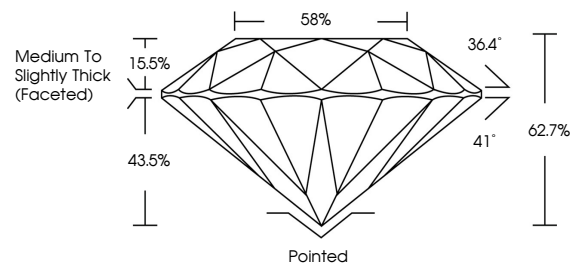
**GRADING RESULTS**

Carat Weight **4.04 CARATS**  
Color Grade **H**  
Clarity Grade **SI 2**  
Cut Grade **EXCELLENT**

**ADDITIONAL GRADING INFORMATION**

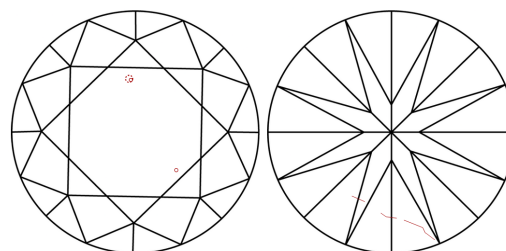
Polish **EXCELLENT**  
Symmetry **EXCELLENT**  
Fluorescence **STRONG**  
Inscription(s) **715586971**

**PROPORTIONS**



Sample Image Used

**CLARITY CHARACTERISTICS**



**KEY TO SYMBOLS**

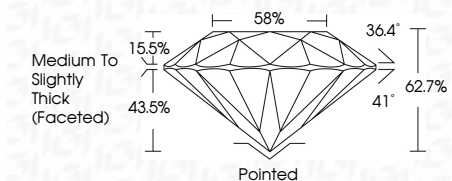
Red symbols indicate internal characteristics.  
Green symbols indicate external characteristics.

**COLOR**

D - F	G - J	K - M	N - R	S - Z	FANCY
Colorless	Near Colorless	Slightly Tinted	Very Light Color	Light Color	

**CLARITY**

IF	VVS <sup>1-2</sup>	VS <sup>1-2</sup>	SI <sup>1-2</sup>	I <sup>1-3</sup>
Internally Flawless	Very Very Slightly Included	Very Slightly Included	Slightly Included	Included



**ADDITIONAL GRADING INFORMATION**

Polish **EXCELLENT**  
Symmetry **EXCELLENT**  
Fluorescence **STRONG**  
Inscription(s) **715586971**



**IGI**



July 14, 2025  
IGI Report No 715586971  
**ROUND BRILLIANT**  
10.09 - 10.14 X 6.34 MM  
4.04 CARATS  
H  
SI 2  
EXCELLENT  
62.7%  
58%  
Medium To Slightly Thick (Faceted)  
Pointed  
EXCELLENT  
EXCELLENT  
STRONG  
715586971