



ELECTRONIC COPY

DIAMOND REPORT

July 12, 2025	
IGI Report Number	713586334
Description	NATURAL DIAMOND
Shape and Cutting Style	ROUND BRILLIANT
Measurements	5.24 - 5.27 X 3.27 MM

GRADING RESULTS

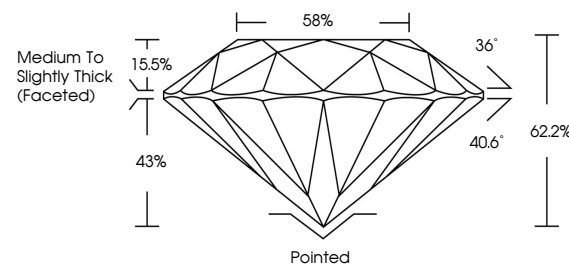
Carat Weight	0.56 CARAT
Color Grade	G
Clarity Grade	INTERNALLY FLAWLESS
Cut Grade	EXCELLENT

ADDITIONAL GRADING INFORMATION

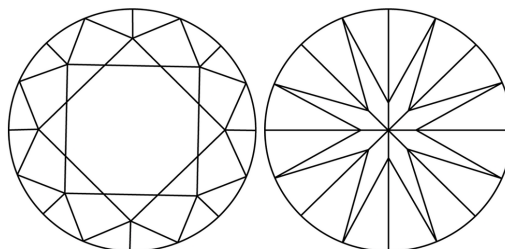
Polish	EXCELLENT
Symmetry	EXCELLENT
Fluorescence	NONE
Inscription(s)	 713586334
Comments: IDEAL CUT ROUND BRILLIANT	

713586334
Report verification at igi.org

PROPORTIONS

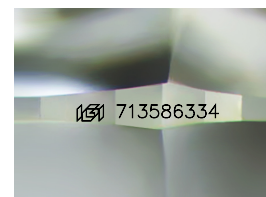


CLARITY CHARACTERISTICS



KEY TO SYMBOLS

Red symbols indicate internal characteristics.
Green symbols indicate external characteristics.



Sample Image Used

COLOR

D - F	G - J	K - M	N - R	S - Z	FANCY
Colorless	Near Colorless	Slightly Tinted	Very Light Color	Light Color	

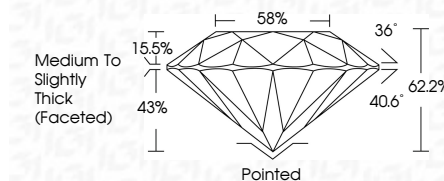
CLARITY

IF	VS ¹⁻²	VS ¹⁻²	SI ¹⁻²	I ¹⁻³
Internally Flawless	Very Very Slightly Included	Very Slightly Included	Slightly Included	Included

DIAMOND REPORT



July 12, 2025	
IGI Report Number	713586334
Description	NATURAL DIAMOND
Shape and Cutting Style	ROUND BRILLIANT
Measurements	5.24 - 5.27 X 3.27 MM
GRADING RESULTS	
Carat Weight	0.56 CARAT
Color Grade	G
Clarity Grade	INTERNALLY FLAWLESS
Cut Grade	EXCELLENT



ADDITIONAL GRADING INFORMATION

Polish	EXCELLENT
Symmetry	EXCELLENT
Fluorescence	NONE
Inscription(s)	(G) 713586334
Comments: IDEAL CUT ROUND BRILLIANT	



© IGI 2020, International Gemological Institute

FD - 10 20



THIS DOCUMENT WAS PRODUCED WITH THE FOLLOWING SECURITY MEASURES: SPECIAL DOCUMENT PAPER, INK SCREENS, WATERMARK, BACKGROUND DESIGNS, HOLOGRAM AND OTHER SECURITY FEATURES NOT LISTED AND DO EXCEED DOCUMENT SECURITY INDUSTRY GUIDELINE

www.igi.org

July 12, 2025	Carat Weight	Medallion
GI Report No. 713586334	Color Grade	Culet
ROUND BRILLIANT	Clarity Grade	Polish
2.04 - 5.27 X 5.27 MM	Depth	Symmetry
	Table	Fluorescence
	Grade	Inscription(s)
		Comments:
		IDEAL CUT ROUND BRILLIANT