



ELECTRONIC COPY

713586186
Report verification at igi.org



July 12, 2025
IGI Report Number **713586186**
Description **NATURAL DIAMOND**
Shape and Cutting Style **ROUND BRILLIANT**
Measurements **5.12 - 5.16 X 3.19 MM**
GRADING RESULTS
Carat Weight **0.52 CARAT**
Color Grade **F**
Clarity Grade **INTERNALLY FLAWLESS**
Cut Grade **EXCELLENT**

DIAMOND REPORT

July 12, 2025
IGI Report Number **713586186**
Description **NATURAL DIAMOND**
Shape and Cutting Style **ROUND BRILLIANT**
Measurements **5.12 - 5.16 X 3.19 MM**

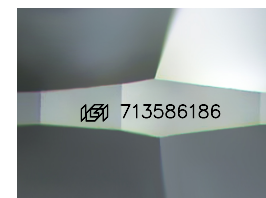
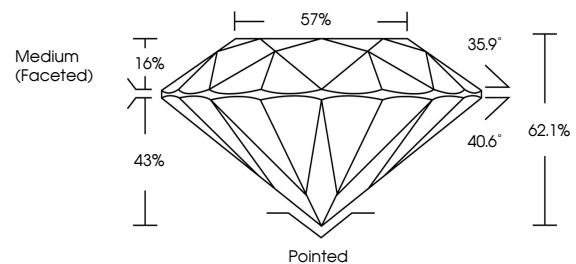
GRADING RESULTS

Carat Weight **0.52 CARAT**
Color Grade **F**
Clarity Grade **INTERNALLY FLAWLESS**
Cut Grade **EXCELLENT**

ADDITIONAL GRADING INFORMATION

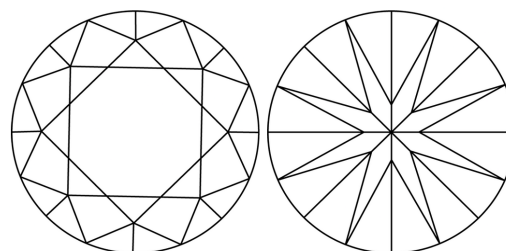
Polish **EXCELLENT**
Symmetry **EXCELLENT**
Fluorescence **NONE**
Inscription(s) **713586186**
Comments: IDEAL CUT ROUND BRILLIANT

PROPORTIONS



Sample Image Used

CLARITY CHARACTERISTICS



KEY TO SYMBOLS

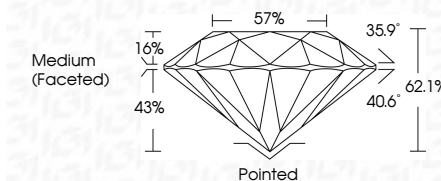
Red symbols indicate internal characteristics.
Green symbols indicate external characteristics.

COLOR

D - F	G - J	K - M	N - R	S - Z	FANCY
Colorless	Near Colorless	Slightly Tinted	Very Light Color	Light Color	

CLARITY

IF	VVS ¹⁻²	VS ¹⁻²	SI ¹⁻²	I ¹⁻³
Internally Flawless	Very Very Slightly Included	Very Slightly Included	Slightly Included	Included



ADDITIONAL GRADING INFORMATION

Polish **EXCELLENT**
Symmetry **EXCELLENT**
Fluorescence **NONE**
Inscription(s) **713586186**
Comments: IDEAL CUT ROUND BRILLIANT



IGI



July 12, 2025
IGI Report No 713586186
ROUND BRILLIANT
5.12 - 5.16 X 3.19 MM
0.52 CARAT
F
F
EXCELLENT
62.1%
57%
Medium (Faceted)
Pointed
EXCELLENT
EXCELLENT
NONE
713586186
Comments: IDEAL CUT ROUND BRILLIANT