



**ELECTRONIC COPY**

## DIAMOND REPORT

September 2, 2025	
IGI Report Number	713558339
Description	NATURAL DIAMOND
Shape and Cutting Style	ROUND BRILLIANT
Measurements	7.27 - 7.32 X 4.55 MM

## GRADING RESULTS

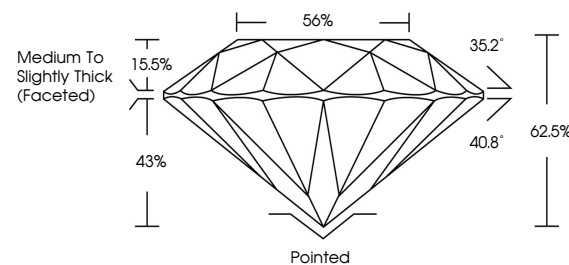
Carat Weight	1.50 CARAT
Color Grade	I
Clarity Grade	VS 2
Cut Grade	EXCELLENT

### ADDITIONAL GRADING INFORMATION

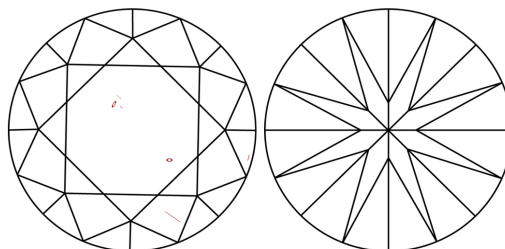
Polish	EXCELLENT
Symmetry	EXCELLENT
Fluorescence	NONE
Inscription(s)	 713558339
Comments: IDEAL CUT ROUND BRILLIANT	

713558339  
Report verification at [igi.org](https://igi.org)

## PROPORTIONS

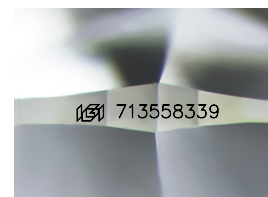


## CLARITY CHARACTERISTICS



## KEY TO SYMBOLS

Red symbols indicate internal characteristics.  
Green symbols indicate external characteristics.



Sample Image Used

**COLOR**

D - F	G - J	K - M	N - R	S - Z	FANCY
Colorless	Near Colorless	Slightly Tinted	Very Light Color	Light Color	

## CLARITY

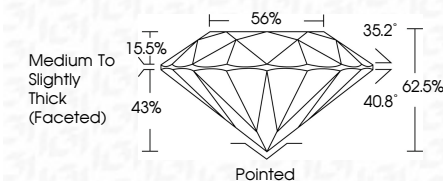
IF	VVS <sup>1-2</sup>	VS <sup>1-2</sup>	SI <sup>1-2</sup>	I <sup>1-3</sup>
Internally Flawless	Very Very Slightly Included	Very Slightly Included	Slightly Included	Included



September 2, 2025	
IGI Report Number	713558339
Description	NATURAL DIAMOND
Shape and Cutting Style	ROUND BRILLIANT
Measurements	7.27 - 7.32 X 4.55 MM

## GRADING RESULTS

Carat Weight	1.50 CARAT
Color Grade	I
Clarity Grade	VS 2
Cut Grade	EXCELLENT



### ADDITIONAL GRADING INFORMATION

Polish	EXCELLENT
Symmetry	EXCELLENT
Fluorescence	NONE
Inscription(s)	(G) 713558339
Comments: IDEAL CUT ROUND BRILLIANT	



© IGI 2020, International Gemological Institute

FD - 10 20



THIS DOCUMENT WAS PRODUCED WITH THE FOLLOWING SECURITY MEASURES: SPECIAL DOCUMENT PAPER, INK SCREENS, WATERMARK, BACKGROUND DESIGNS, HOLOGRAM AND OTHER SECURITY FEATURES NOT LISTED AND DO EXCEED DOCUMENT SECURITY INDUSTRY GUIDELINES

**www.igi.org**

September 2, 2025  
IGI Report No 713558399  
ROUND BRILLIANT

<b>1</b>	<b>VS 2</b>	<b>62.5%</b>	<b>56%</b>	<b>Medium to Slightly Thick (Faceted)</b>	<b>Poited</b>	<b>EXCELLENT</b>	<b>NONE</b>	<b>deal 7135559390</b>
<b>1.50 CARAT</b>	<b>VS 2</b>	<b>62.5%</b>	<b>56%</b>	<b>Medium to Slightly Thick (Faceted)</b>	<b>Poited</b>	<b>EXCELLENT</b>	<b>NONE</b>	<b>deal 7135559390</b>
<b>1.727 X 3.455 MM</b>	<b>VS 2</b>	<b>62.5%</b>	<b>56%</b>	<b>Medium to Slightly Thick (Faceted)</b>	<b>Poited</b>	<b>EXCELLENT</b>	<b>NONE</b>	<b>deal 7135559390</b>
<b>Carat Weight</b>	<b>VS 2</b>	<b>62.5%</b>	<b>56%</b>	<b>Medium to Slightly Thick (Faceted)</b>	<b>Poited</b>	<b>EXCELLENT</b>	<b>NONE</b>	<b>deal 7135559390</b>
<b>Color Grade</b>	<b>VS 2</b>	<b>62.5%</b>	<b>56%</b>	<b>Medium to Slightly Thick (Faceted)</b>	<b>Poited</b>	<b>EXCELLENT</b>	<b>NONE</b>	<b>deal 7135559390</b>
<b>Clarity Grade</b>	<b>VS 2</b>	<b>62.5%</b>	<b>56%</b>	<b>Medium to Slightly Thick (Faceted)</b>	<b>Poited</b>	<b>EXCELLENT</b>	<b>NONE</b>	<b>deal 7135559390</b>
<b>Cut Grade</b>	<b>VS 2</b>	<b>62.5%</b>	<b>56%</b>	<b>Medium to Slightly Thick (Faceted)</b>	<b>Poited</b>	<b>EXCELLENT</b>	<b>NONE</b>	<b>deal 7135559390</b>
<b>Depth</b>	<b>VS 2</b>	<b>62.5%</b>	<b>56%</b>	<b>Medium to Slightly Thick (Faceted)</b>	<b>Poited</b>	<b>EXCELLENT</b>	<b>NONE</b>	<b>deal 7135559390</b>
<b>Table</b>	<b>VS 2</b>	<b>62.5%</b>	<b>56%</b>	<b>Medium to Slightly Thick (Faceted)</b>	<b>Poited</b>	<b>EXCELLENT</b>	<b>NONE</b>	<b>deal 7135559390</b>
<b>Grade</b>	<b>VS 2</b>	<b>62.5%</b>	<b>56%</b>	<b>Medium to Slightly Thick (Faceted)</b>	<b>Poited</b>	<b>EXCELLENT</b>	<b>NONE</b>	<b>deal 7135559390</b>
<b>Culet</b>	<b>VS 2</b>	<b>62.5%</b>	<b>56%</b>	<b>Medium to Slightly Thick (Faceted)</b>	<b>Poited</b>	<b>EXCELLENT</b>	<b>NONE</b>	<b>deal 7135559390</b>
<b>Polish</b>	<b>VS 2</b>	<b>62.5%</b>	<b>56%</b>	<b>Medium to Slightly Thick (Faceted)</b>	<b>Poited</b>	<b>EXCELLENT</b>	<b>NONE</b>	<b>deal 7135559390</b>
<b>Symmetry</b>	<b>VS 2</b>	<b>62.5%</b>	<b>56%</b>	<b>Medium to Slightly Thick (Faceted)</b>	<b>Poited</b>	<b>EXCELLENT</b>	<b>NONE</b>	<b>deal 7135559390</b>
<b>Fluorescence</b>	<b>VS 2</b>	<b>62.5%</b>	<b>56%</b>	<b>Medium to Slightly Thick (Faceted)</b>	<b>Poited</b>	<b>EXCELLENT</b>	<b>NONE</b>	<b>deal 7135559390</b>
<b>Inscription(s)</b>	<b>VS 2</b>	<b>62.5%</b>	<b>56%</b>	<b>Medium to Slightly Thick (Faceted)</b>	<b>Poited</b>	<b>EXCELLENT</b>	<b>NONE</b>	<b>deal 7135559390</b>

**Comments:**  
IDEAL CUT ROUND BRILLIANT