



ELECTRONIC COPY

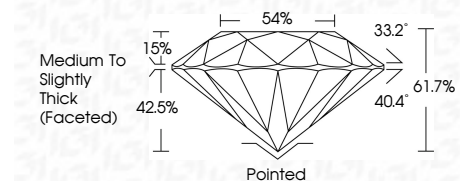
713558221
Report verification at igi.org



August 12, 2025
IGI Report Number **713558221**
Description **NATURAL DIAMOND**
Shape and Cutting Style **ROUND BRILLIANT**
Measurements **6.59 - 6.63 X 4.08 MM**

GRADING RESULTS

Carat Weight **1.10 CARAT**
Color Grade **J**
Clarity Grade **VS 1**
Cut Grade **EXCELLENT**



ADDITIONAL GRADING INFORMATION

Polish **EXCELLENT**
Symmetry **EXCELLENT**
Fluorescence **NONE**
Inscription(s) **IGI 713558221**
Comments: IDEAL CUT ROUND BRILLIANT

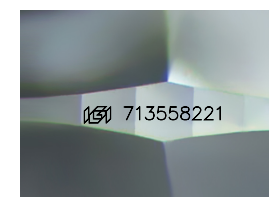
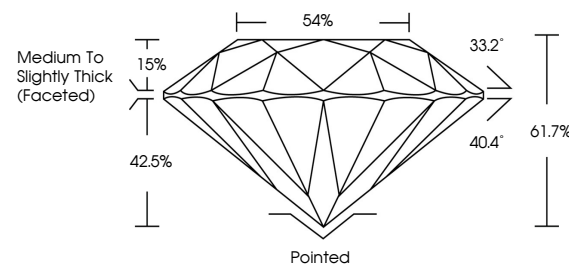


IGI



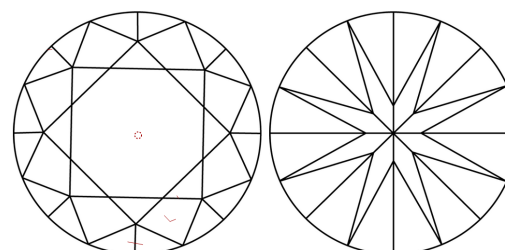
August 12, 2025
IGI Report No 713558221
ROUND BRILLIANT
6.59 - 6.63 X 4.08 MM
1.10 CARAT J
Color Grade EXCELLENT
Clarity Grade VS 1
Depth 61.7%
Table 54%
Girdle Medium To Slightly Thick (Faceted)
Culet Pointed
Polish EXCELLENT
Symmetry EXCELLENT
Fluorescence NONE
Inscription(s) IGI 713558221
Comments: IDEAL CUT ROUND BRILLIANT

PROPORTIONS



Sample Image Used

CLARITY CHARACTERISTICS



KEY TO SYMBOLS

Red symbols indicate internal characteristics.
Green symbols indicate external characteristics.

COLOR

D - F	G - J	K - M	N - R	S - Z	FANCY
Colorless	Near Colorless	Slightly Tinted	Very Light Color	Light Color	

CLARITY

IF	VVS ¹⁻²	VS ¹⁻²	SI ¹⁻²	I ¹⁻³
Internally Flawless	Very Very Slightly Included	Very Slightly Included	Slightly Included	Included