



ELECTRONIC COPY

DIAMOND REPORT

July 18, 2025	
IGI Report Number	713557980
Description	NATURAL DIAMOND
Shape and Cutting Style	ROUND BRILLIANT
Measurements	6.78 - 6.82 X 4.25 MM

GRADING RESULTS

Carat Weight	1.20 CARAT
Color Grade	G
Clarity Grade	VS 2
Cut Grade	EXCELLENT

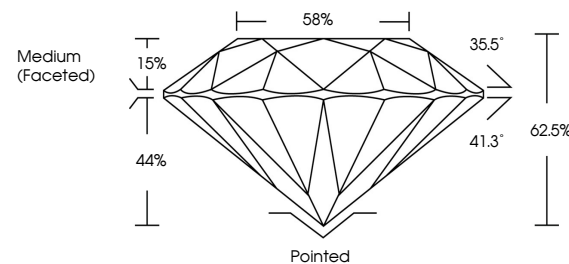
ADDITIONAL GRADING INFORMATION

Polish	EXCELLENT
Symmetry	EXCELLENT
Fluorescence	STRONG
Inscription(s)	131 713557980

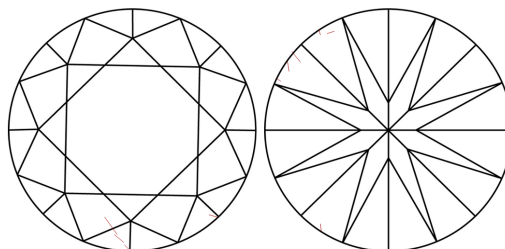
Comments: IDEAL CUT ROUND BRILLIANT
Faint Yellowish Green

713557980
Report verification at igi.org

PROPORTIONS

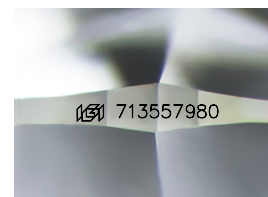


CLARITY CHARACTERISTICS



KEY TO SYMBOLS

Red symbols indicate internal characteristics.
Green symbols indicate external characteristics.



Sample Image Used

COLOR

D - F	G - J	K - M	N - R	S - Z	FANCY
Colorless	Near Colorless	Slightly Tinted	Very Light Color	Light Color	

CLARITY

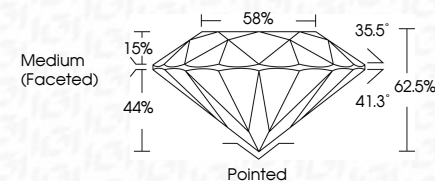
IF	VVS ¹⁻²	VS ¹⁻²	SI ¹⁻²	I ¹⁻³
Internally Flawless	Very Very Slightly Included	Very Slightly Included	Slightly Included	Included



July 18, 2025	
IGI Report Number	713557980
Description	NATURAL DIAMOND
Shape and Cutting Style	ROUND BRILLIANT
Measurements	6.78 - 6.82 X 4.25 MM

GRADING RESULTS

Carat Weight	1.20 CARAT
Color Grade	G
Clarity Grade	VS 2
Cut Grade	EXCELLENT



ADDITIONAL GRADING INFORMATION

Polish	EXCELLENT
Symmetry	EXCELLENT
Fluorescence	STRONG
Inscription(s)	1531 713557980
Comments: IDEAL CUT ROUND BRILLIANT Faint Yellowish Green	



© IGI 2020, International Gemological Institute

FD - 10 20

www.igi.org

THIS DOCUMENT WAS PRODUCED WITH THE FOLLOWING SECURITY MEASURES: SPECIAL DOCUMENT PAPER, INK SCREENS, WATERMARK BACKGROUND DESIGNS, HOLOGRAM AND OTHER SECURITY FEATURES NOT LISTED AND DO EXCEED DOCUMENT SECURITY INDUSTRY GUIDELINES

July 18, 2005	IGI Report No 713557960
ROUND	ROUND
6.78 - 6.82 X 4.25 MM	
Carat Weight	
Color Grade	
Clarity Grade	
Cut Grade	
Depth	
Table	
Girdle	
Culet	
Polish	
Symmetry	
Fluorescence	
Inscription(s)	
Comments:	
IDEAL CUT ROUND BRILLIANT	
Color: Very Light Green	
Clarity: Very Slightly Included	
Cut: Excellent	
Fluorescence: None	
Inscription: None	