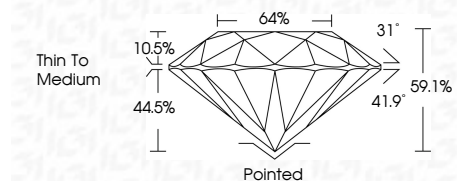




July 2, 2025
IGI Report Number **713546231**
Description **NATURAL DIAMOND**
Shape and Cutting Style **ROUND BRILLIANT**
Measurements **9.60 - 9.76 X 5.73 MM**

GRADING RESULTS

Carat Weight **3.24 CARATS**
Color Grade **J**
Clarity Grade **VVS 2**
Cut Grade **VERY GOOD**



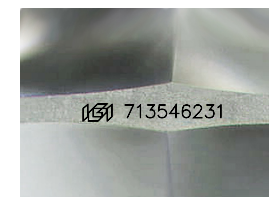
ADDITIONAL GRADING INFORMATION

Polish **EXCELLENT**
Symmetry **VERY GOOD**
Fluorescence **NONE**
Inscription(s) **IGI 713546231**



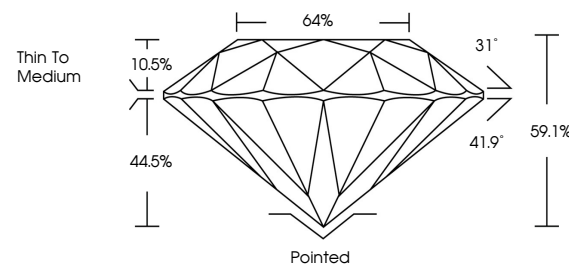
IGI

July 2, 2025
IGI Report No 713546231
ROUND BRILLIANT
9.60 - 9.76 X 5.73 MM
3.24 CARATS
Color Grade **J**
Clarity Grade **VVS 2**
Depth **61.1%**
Table **64%**
Girdle **Thin To Medium**
Culet **Pointed**
Polish **EXCELLENT**
Symmetry **VERY GOOD**
Fluorescence **NONE**
Inscription(s) **IGI 713546231**

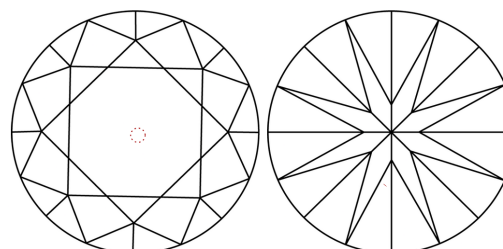


Sample Image Used

PROPORTIONS



CLARITY CHARACTERISTICS



KEY TO SYMBOLS

Red symbols indicate internal characteristics.
Green symbols indicate external characteristics.

COLOR

D - F	G - J	K - M	N - R	S - Z	FANCY
Colorless	Near Colorless	Slightly Tinted	Very Light Color	Light Color	

CLARITY

IF	VVS ¹⁻²	VS ¹⁻²	SI ¹⁻²	I ¹⁻³
Internally Flawless	Very Very Slightly Included	Very Slightly Included	Slightly Included	Included

