



INTERNATIONAL GEMOLOGICAL INSTITUTE

DIAMOND REPORT

September 3, 2025

IGI Report Number

713542084

Description

NATURAL DIAMOND

Shape and Cutting Style

ROUND BRILLIANT

Measurements

5.84 - 5.88 X 3.66 MM

GRADING RESULTS

Carat Weight

0.77 CARAT

Color Grade

H

Clarity Grade

VS 1

Cut Grade

EXCELLENT

ADDITIONAL GRADING INFORMATION

Polish

EXCELLENT

Symmetry

EXCELLENT

Fluorescence

NONE

Identification Features

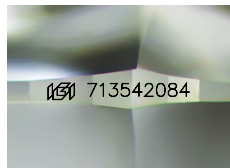
CLOUD

Inscription(s)

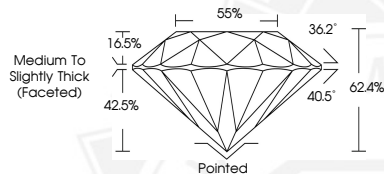
IGI 713542084

Comments: IDEAL CUT ROUND BRILLIANT

ELECTRONIC COPY



Sample Image Used



THIS DOCUMENT WAS PRODUCED WITH THE FOLLOWING SECURITY MEASURES: SPECIAL DOCUMENT PAPER, INK SCREENS, WATERMARK, BACKGROUND DESIGNS, HOLOGRAM AND OTHER SECURITY FEATURES NOT LISTED AND DO EXCEED DOCUMENT SECURITY INDUSTRY GUIDELINES.

For terms & conditions and to verify this report, please visit www.igi.org



September 3, 2025

IGI Report Number 713542084

ROUND BRILLIANT

NATURAL DIAMOND

5.84 - 5.88 X 3.66 MM

Carat Weight 0.77 CARAT

Color Grade H

Clarity Grade VS 1

Cut Grade EXCELLENT

Polish EXCELLENT

Symmetry EXCELLENT

Fluorescence NONE

Inscription(s) IGI 713542084

Comments: IDEAL CUT ROUND

BRILLIANT



September 3, 2025

IGI Report Number 713542084

ROUND BRILLIANT

NATURAL DIAMOND

5.84 - 5.88 X 3.66 MM

Carat Weight 0.77 CARAT

Color Grade H

Clarity Grade VS 1

Cut Grade EXCELLENT

Polish EXCELLENT

Symmetry EXCELLENT

Fluorescence NONE

Inscription(s) IGI 713542084

Comments: IDEAL CUT ROUND

BRILLIANT