



ELECTRONIC COPY

713520933
Report verification at igi.org



December 10, 2025
IGI Report Number **713520933**
Description **NATURAL DIAMOND**
Shape and Cutting Style **EMERALD CUT**
Measurements **6.71 X 4.70 X 3.12 MM**
GRADING RESULTS
Carat Weight **1.00 CARAT**
Color Grade **G**
Clarity Grade **SI 2**
Cut Grade **VERY GOOD**

DIAMOND REPORT

December 10, 2025
IGI Report Number **713520933**
Description **NATURAL DIAMOND**
Shape and Cutting Style **EMERALD CUT**
Measurements **6.71 X 4.70 X 3.12 MM**

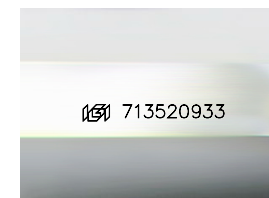
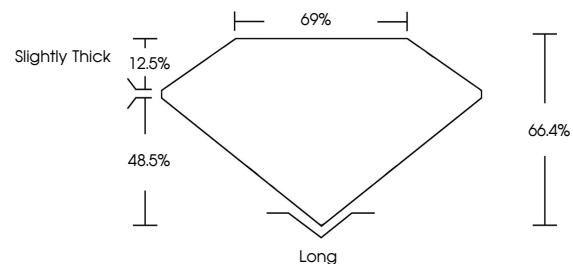
GRADING RESULTS

Carat Weight **1.00 CARAT**
Color Grade **G**
Clarity Grade **SI 2**
Cut Grade **VERY GOOD**

ADDITIONAL GRADING INFORMATION

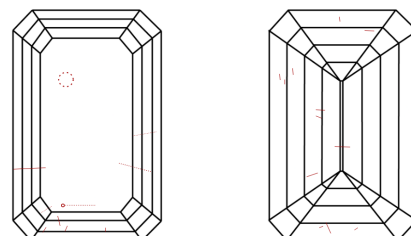
Polish **EXCELLENT**
Symmetry **EXCELLENT**
Fluorescence **NONE**
Inscription(s) **713520933**

PROPORTIONS



Sample Image Used

CLARITY CHARACTERISTICS



KEY TO SYMBOLS

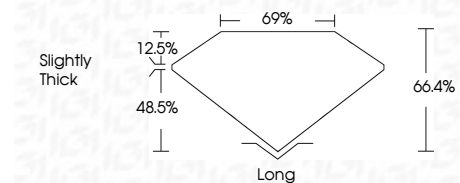
Red symbols indicate internal characteristics.
Green symbols indicate external characteristics.

COLOR

D - F	G - J	K - M	N - R	S - Z	FANCY
Colorless	Near Colorless	Slightly Tinted	Very Light Color	Light Color	

CLARITY

FL	IF	VVS ¹⁻²	VS ¹⁻²	SI ¹⁻²	I ¹⁻³
Flawless	Internally Flawless	Very Very Slightly Included	Very Slightly Included	Slightly Included	Included



ADDITIONAL GRADING INFORMATION

Polish **EXCELLENT**
Symmetry **EXCELLENT**
Fluorescence **NONE**
Inscription(s) **713520933**



IGI



December 10, 2025
IGI Report No 713520933
EMERALD CUT
6.71 X 4.70 X 3.12 MM
Carat Weight **1.00 CARAT**
Color Grade **G**
Clarity Grade **SI 2**
Cut Grade **VERY GOOD**
Depth **48.5%**
Table **12.5%**
Girdle **69%**
Slightly Thick
Long **EXCELLENT**
Polish **EXCELLENT**
Symmetry **EXCELLENT**
Fluorescence **NONE**
Inscription(s) **713520933**