



ELECTRONIC COPY

DIAMOND REPORT

June 13, 2025	
IGI Report Number	713511769
Description	NATURAL DIAMOND
Shape and Cutting Style	ROUND BRILLIANT
Measurements	6.93 - 7.00 X 4.41 MM

GRADING RESULTS

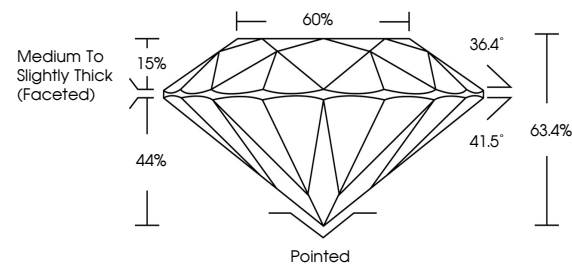
Carat Weight	1.34 CARAT
Color Grade	J
Clarity Grade	VS 2
Cut Grade	EXCELLENT

ADDITIONAL GRADING INFORMATION

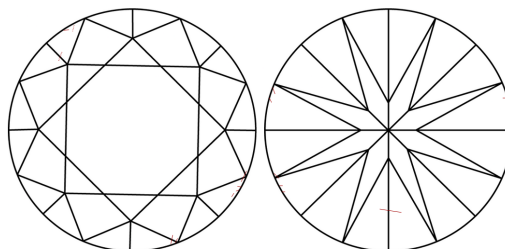
Polish	EXCELLENT
Symmetry	EXCELLENT
Fluorescence	NONE
Inscription(s)	131 713511769

713511769
Report verification at igi.org

PROPORTIONS

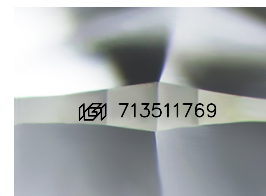


CLARITY CHARACTERISTICS



KEY TO SYMBOLS

Red symbols indicate internal characteristics.
Green symbols indicate external characteristics.



Sample Image Used

COLOR

D - F	G - J	K - M	N - R	S - Z	FANCY
Colorless	Near Colorless	Slightly Tinted	Very Light Color	Light Color	

CLARITY

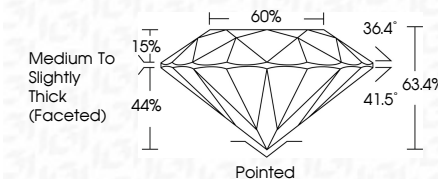
IF	VVS ¹⁻²	VS ¹⁻²	SI ¹⁻²	I ¹⁻³
Internally Flawless	Very Very Slightly Included	Very Slightly Included	Slightly Included	Included



June 13, 2025	
IGI Report Number	713511769
Description	NATURAL DIAMOND
Shape and Cutting Style	ROUND BRILLIANT
Measurements	6.93 - 7.00 X 4.41 MM

GRADING RESULTS

Carat Weight	1.34 CARAT
Color Grade	J
Clarity Grade	VS 2
Cut Grade	EXCELLENT



ADDITIONAL GRADING INFORMATION

Polish	EXCELLENT
Symmetry	EXCELLENT
Fluorescence	NONE
Inscription(s)	(5) 713511769



© IGI 2020, International Gemological Institute

FD - 10 20



THIS DOCUMENT WAS PRODUCED WITH THE FOLLOWING SECURITY MEASURES: SPECIAL DOCUMENT PAPER, INK SCREENS, WATERMARK, BACKGROUND DESIGNS, HOLOGRAM AND OTHER SECURITY FEATURES NOT LISTED AND DO EXCEED DOCUMENT SECURITY INDUSTRY GUIDELINE

www.igi.org

June 13, 2025
 IGI Report No 713511769
 SOUND BRILLIANT

Carat Weight	1.34 CARAT
Color Grade	J
Clarity Grade	VS 2
Cut Grade	EXCELLENT
Depth	63.4%
Table	60%
Grade	Medium to Slightly Thick (Faceted)
Culet	Pointed
Polish	EXCELLENT
Symmetry	EXCELLENT
Fluorescence	NONE
Reference(s)	see 71611176