



ELECTRONIC COPY

DIAMOND REPORT

July 28, 2025	
IGI Report Number	713504029
Description	NATURAL DIAMOND
Shape and Cutting Style	ROUND BRILLIANT
Measurements	8.47 - 8.59 X 5.39 MM

GRADING RESULTS

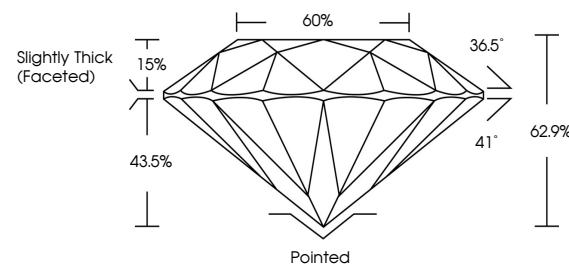
Carat Weight	2.50 CARATS
Color Grade	M
Clarity Grade	SI 2
Cut Grade	EXCELLENT

ADDITIONAL GRADING INFORMATION

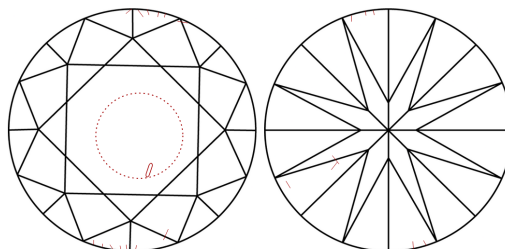
Polish	EXCELLENT
Symmetry	EXCELLENT
Fluorescence	NONE
Inscription(s)	131 713504029

713504029
Report verification at igi.org

PROPORTIONS

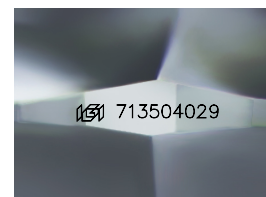


CLARITY CHARACTERISTICS



KEY TO SYMBOLS

Red symbols indicate internal characteristics.
Green symbols indicate external characteristics.



Sample Image Used

COLOR

D - F	G - J	K - M	N - R	S - Z	FANCY
Colorless	Near Colorless	Slightly Tinted	Very Light Color	Light Color	

CLARITY

IF	VVS ¹⁻²	VS ¹⁻²	SI ¹⁻²	I ¹⁻³
Internally Flawless	Very Very Slightly Included	Very Slightly Included	Slightly Included	Included

© IGI 2020, International Gemological Institute

FD - 10 20

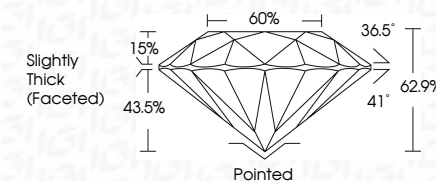
DIAMOND REPORT



July 28, 2025	
IGI Report Number	713504029
Description	NATURAL DIAMOND
Shape and Cutting Style	ROUND BRILLIANT
Measurements	8.47 - 8.59 X 5.39 MM

GRADING RESULTS

Carat Weight	2.50 CARATS
Color Grade	M
Clarity Grade	SI 2
Cut Grade	EXCELLENT



ADDITIONAL GRADING INFORMATION

Polish	EXCELLENT
Symmetry	EXCELLENT
Fluorescence	NONE
Inscription(s)	(18) 713504029



July 28, 2025
GI Report No 713504029
ROUND BRILLIANT

4.47 - 8.99 X 5.39 MM	2.50 CARATS	M
Carat Weight	\$12	
Color Grade	EXCELLENT	
Clarity Grade	62.9%	
Cut Grade	60%	
Depth		
Table		
Girdle		
	Slightly Thick (Faceted)	
Culet		
Polish	Pointed	
Symmetry	EXCELLENT	
Fluorescence	EXCELLENT	
	NONE	
		See 71 seconds