



ELECTRONIC COPY

DIAMOND REPORT

| | |
|-------------------------|-----------------------|
| July 10, 2025 | |
| IGI Report Number | 713503823 |
| Description | NATURAL DIAMOND |
| Shape and Cutting Style | EMERALD CUT |
| Measurements | 7.07 X 4.55 X 3.15 MM |

GRADING RESULTS

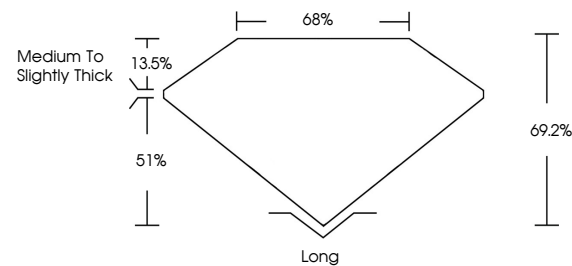
| | |
|---------------|------------|
| Carat Weight | 1.00 CARAT |
| Color Grade | G |
| Clarity Grade | I 1 |
| Cut Grade | VERY GOOD |

ADDITIONAL GRADING INFORMATION

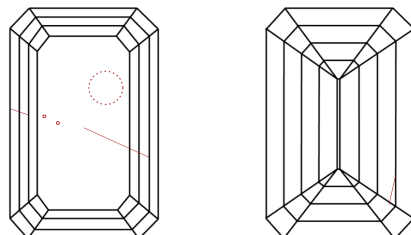
| | |
|----------------|---------------|
| Polish | EXCELLENT |
| Symmetry | VERY GOOD |
| Fluorescence | NONE |
| Inscription(s) | 131 713503823 |

713503823
Report verification at igi.org

PROPORTIONS

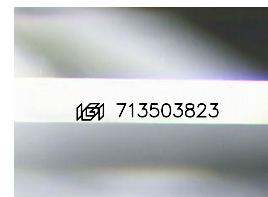


CLARITY CHARACTERISTICS



KEY TO SYMBOLS

Red symbols indicate internal characteristics.
Green symbols indicate external characteristics.



Sample Image Used

COLOR

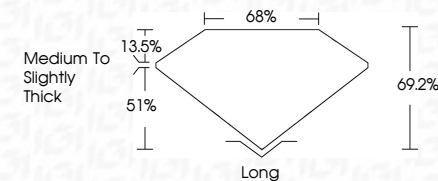
| D - F | G - J | K - M | N - R | S - Z | FANCY |
|-----------|----------------|-----------------|------------------|-------------|-------|
| Colorless | Near Colorless | Slightly Tinted | Very Light Color | Light Color | |

CLARITY

| IF | VVS ¹⁻² | VS ¹⁻² | SI ¹⁻² | I ¹⁻³ |
|---------------------|-----------------------------|------------------------|-------------------|------------------|
| Internally Flawless | Very Very Slightly Included | Very Slightly Included | Slightly Included | Included |



| | |
|-------------------------|-----------------------|
| July 10, 2025 | |
| IGI Report Number | 713503823 |
| Description | NATURAL DIAMOND |
| Shape and Cutting Style | EMERALD CUT |
| Measurements | 7.07 X 4.55 X 3.15 MM |
| GRADING RESULTS | |
| Carat Weight | 1.00 CARAT |
| Color Grade | G |
| Clarity Grade | I 1 |
| Cut Grade | VERY GOOD |



ADDITIONAL GRADING INFORMATION

| | |
|----------------|----------------|
| Polish | EXCELLENT |
| Symmetry | VERY GOOD |
| Fluorescence | NONE |
| Inscription(s) | (65) 713503823 |



IG



© IGI 2020, International Gemological Institute

FD - 10 20



THIS DOCUMENT WAS PRODUCED WITH THE FOLLOWING SECURITY MEASURES: SPECIAL DOCUMENT PAPER, INK SCREENS, WATERMARK, BACKGROUND DESIGNS, HOLOGRAM AND OTHER SECURITY FEATURES NOT LISTED AND DO EXCEED DOCUMENT SECURITY INDUSTRY GUIDELINES

www.igi.org

July 10, 2025

IGI Report No 7

7.07 X 4.55 X 3.15 MM

7.07 X 4.55 X 3.15 MM
Carat Weight
1.00 CARAT

Color Grade

| | |
|---------------|----|
| Clarity Grade | I1 |
|---------------|----|

Cut Grade

| | |
|-------|-------|
| Depth | 69.2% |
| Table | 68% |

Medium To Slightly

THICK

Culet Long
Polish EXCELLENT

Symmetry

| Fluorescence | NONE |
|---------------|------|
| 650 719503893 | |

022000001 / 06571