



ELECTRONIC COPY

DIAMOND REPORT

July 1, 2025	
IGI Report Number	712579146
Description	NATURAL DIAMOND
Shape and Cutting Style	ROUND BRILLIANT
Measurements	7.78 - 7.88 X 5.09 MM

GRADING RESULTS

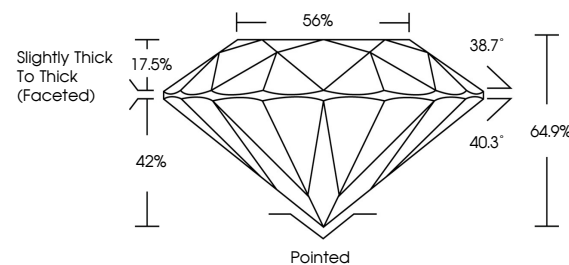
Carat Weight	2.01 CARATS
Color Grade	G
Clarity Grade	SI 2
Cut Grade	VERY GOOD

ADDITIONAL GRADING INFORMATION

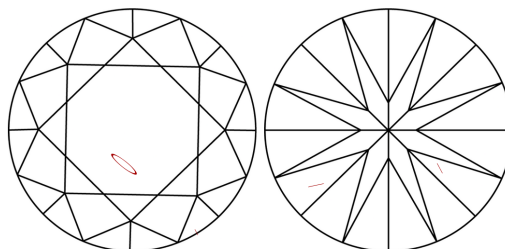
Polish	EXCELLENT
Symmetry	EXCELLENT
Fluorescence	NONE
Inscription(s)	131 712579146

712579146
Report verification at igi.org

PROPORTIONS

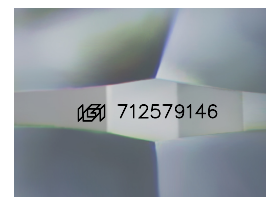


CLARITY CHARACTERISTICS



KEY TO SYMBOLS

Red symbols indicate internal characteristics.
Green symbols indicate external characteristics.



Sample Image Used

COLOR

D - F	G - J	K - M	N - R	S - Z	FANCY
Colorless	Near Colorless	Slightly Tinted	Very Light Color	Light Color	

CLARITY

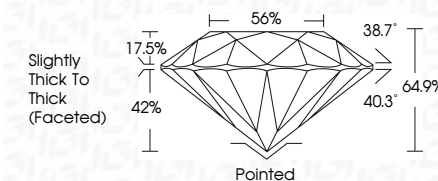
IF	VVS ¹⁻²	VS ¹⁻²	SI ¹⁻²	I ¹⁻³
Internally Flawless	Very Very Slightly Included	Very Slightly Included	Slightly Included	Included



July 1, 2025	
IGI Report Number	712579146
Description	NATURAL DIAMOND
Shape and Cutting Style	ROUND BRILLIANT
Measurements	7.78 - 7.88 X 5.09 MM

GRADING RESULTS

Carat Weight	2.01 CARATS
Color Grade	G
Clarity Grade	SI 2
Cut Grade	VERY GOOD



ADDITIONAL GRADING INFORMATION

Polish	EXCELLENT
Symmetry	EXCELLENT
Fluorescence	NONE
Inscription(s)	163 712579146



© IGI 2020, International Gemological Institute

FD - 10 20



THIS DOCUMENT WAS PRODUCED WITH THE FOLLOWING SECURITY MEASURES: SPECIAL DOCUMENT PAPER, INK SCREENS, WATERMARK, BACKGROUND DESIGNS, HOLOGRAM AND OTHER SECURITY FEATURES NOT LISTED AND DO EXCEED DOCUMENT SECURITY INDUSTRY GUIDELINES

www.igi.org

July 1, 2025
GI Report No 712579146
POIND BRILLIANT

7.78 x 7.88 x 5.09 MM	Carat Weight	2.01 CARATS
	Color Grade	G
	Clarity Grade	S12
	Cut Grade	VERY GOOD
	Depth	64.9%
	Table	56%
	Girdle	Slightly Thick to Thick (Faceted)
	Culet	Pointed
	Polish	EXCELLENT
	Symmetry	EXCELLENT
	Fluorescence	NONE
	Fluorescence Color	see 719270146