



ELECTRONIC COPY

712558442
Report verification at igi.org



January 19, 2026
IGI Report Number **712558442**
Description **NATURAL DIAMOND**
Shape and Cutting Style **ROUND BRILLIANT**
Measurements **10.84 - 10.92 X 6.80 MM**
GRADING RESULTS
Carat Weight **5.03 CARATS**
Color Grade **I**
Clarity Grade **INTERNALLY FLAWLESS**
Cut Grade **EXCELLENT**

DIAMOND REPORT

January 19, 2026
IGI Report Number **712558442**
Description **NATURAL DIAMOND**
Shape and Cutting Style **ROUND BRILLIANT**
Measurements **10.84 - 10.92 X 6.80 MM**

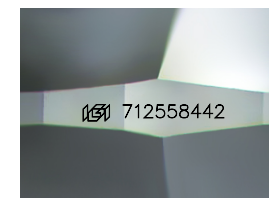
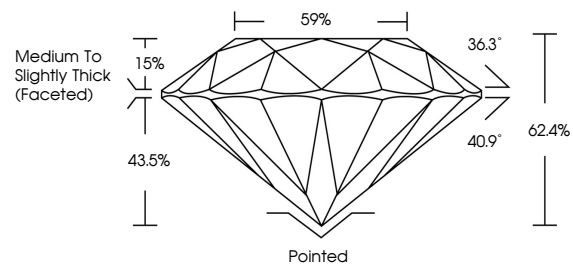
GRADING RESULTS

Carat Weight **5.03 CARATS**
Color Grade **I**
Clarity Grade **INTERNALLY FLAWLESS**
Cut Grade **EXCELLENT**

ADDITIONAL GRADING INFORMATION

Polish **EXCELLENT**
Symmetry **EXCELLENT**
Fluorescence **NONE**
Inscription(s) **712558442**

PROPORTIONS



Sample Image Used

CLARITY CHARACTERISTICS



KEY TO SYMBOLS

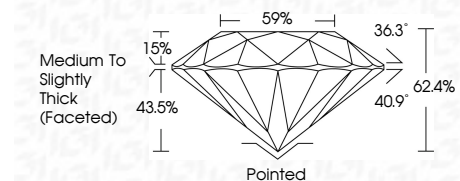
Red symbols indicate internal characteristics.
Green symbols indicate external characteristics.

COLOR

D - F	G - J	K - M	N - R	S - Z	FANCY
Colorless	Near Colorless	Slightly Tinted	Very Light Color	Light Color	

CLARITY

FL	IF	VVS ¹⁻²	VS ¹⁻²	SI ¹⁻²	I ¹⁻³
Flawless	Internally Flawless	Very Very Slightly Included	Very Slightly Included	Slightly Included	Included



ADDITIONAL GRADING INFORMATION

Polish **EXCELLENT**
Symmetry **EXCELLENT**
Fluorescence **NONE**
Inscription(s) **712558442**



IGI



January 19, 2026
IGI Report No 712558442
ROUND BRILLIANT
10.84 - 10.92 X 6.80 MM
5.03 CARATS
I
EXCELLENT
EXCELLENT
EXCELLENT
EXCELLENT
NONE
Medium To Slightly Thick (Faceted)
Pointed
EXCELLENT
EXCELLENT
NONE
712558442