



ELECTRONIC COPY

DIAMOND REPORT

| | |
|-------------------------|-----------------------|
| September 9, 2025 | |
| IGI Report Number | 712553828 |
| Description | NATURAL DIAMOND |
| Shape and Cutting Style | ROUND BRILLIANT |
| Measurements | 7.36 - 7.39 X 4.46 MM |

GRADING RESULTS

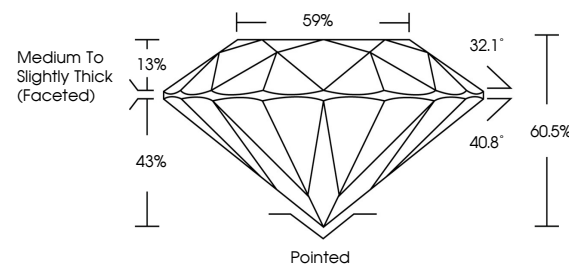
| | |
|---------------|---------------------|
| Carat Weight | 1.51 CARAT |
| Color Grade | H |
| Clarity Grade | INTERNALLY FLAWLESS |
| Cut Grade | EXCELLENT |

ADDITIONAL GRADING INFORMATION

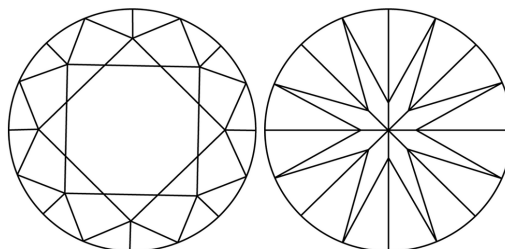
| | |
|----------------|---------------|
| Polish | EXCELLENT |
| Symmetry | EXCELLENT |
| Fluorescence | NONE |
| Inscription(s) | 131 712553828 |

712553828
Report verification at igi.org

PROPORTIONS

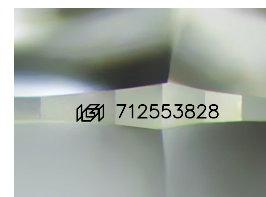


CLARITY CHARACTERISTICS



KEY TO SYMBOLS

Red symbols indicate internal characteristics.
Green symbols indicate external characteristics.



Sample Image Used

COLOR

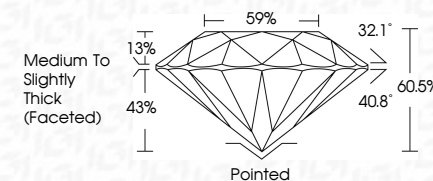
| D - F | G - J | K - M | N - R | S - Z | FANCY |
|-----------|----------------|-----------------|------------------|-------------|-------|
| Colorless | Near Colorless | Slightly Tinted | Very Light Color | Light Color | |

CLARITY

| IF | VS ¹⁻² | VS ¹⁻² | SI ¹⁻² | I ¹⁻³ |
|---------------------|-----------------------------|------------------------|-------------------|------------------|
| Internally Flawless | Very Very Slightly Included | Very Slightly Included | Slightly Included | Included |



| | |
|-------------------------|-----------------------|
| September 9, 2025 | |
| IGI Report Number | 712553828 |
| Description | NATURAL DIAMOND |
| Shape and Cutting Style | ROUND BRILLIANT |
| Measurements | 7.36 - 7.39 X 4.46 MM |
| GRADING RESULTS | |
| Carat Weight | 1.51 CARAT |
| Color Grade | H |
| Clarity Grade | INTERNALLY FLAWLESS |
| Cut Grade | EXCELLENT |



ADDITIONAL GRADING INFORMATION

| | |
|----------------|----------------|
| Polish | EXCELLENT |
| Symmetry | EXCELLENT |
| Fluorescence | NONE |
| Inscription(s) | (18) 712553828 |



© IGI 2020, International Gemological Institute

FD - 10 20

www.igi.org



THIS DOCUMENT WAS PRODUCED WITH THE FOLLOWING SECURITY MEASURES: SPECIAL DOCUMENT PAPER, INK SCREENS, WATERMARK, BACKGROUND DESIGNS, HOLOGRAM AND OTHER SECURITY FEATURES NOT LISTED AND DO EXCEED DOCUMENT SECURITY INDUSTRY GUIDELINES

September 9, 2025
IGI Report No 712553
ROUND BRILLIANT

| | |
|---------------|---------------------------------------|
| Carat Weight | 1.51 CARAT |
| Color Grade | H |
| Clarity Grade | IF |
| Cut Grade | EXCELLENT 60.65% |
| Depth | 59% |
| Table | Medium to Slightly Thick (faceted) |
| Girdle | Pointed |
| Culet | EXCELLENT |
| Polish | EXCELLENT |
| Symmetry | EXCELLENT |
| Fluorescence | NONE |
| Inspection | See 71 images |