



DIAMOND REPORT

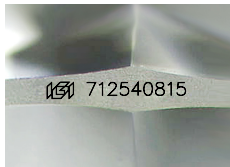
July 11, 2025
IGI Report Number **712540815**
Description **NATURAL DIAMOND**
Shape and Cutting Style **ROUND BRILLIANT**
Measurements **4.67 - 4.70 X 2.95 MM**

GRADING RESULTS

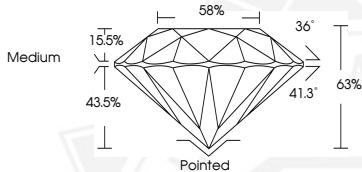
Carat Weight **0.40 CARAT**
Color Grade **K**
Clarity Grade **VS 2**
Cut Grade **EXCELLENT**

ADDITIONAL GRADING INFORMATION

Polish **EXCELLENT**
Symmetry **EXCELLENT**
Fluorescence **NONE**
Identification Features **CRYSTAL NEEDLE**
Inscription(s) **IGI 712540815**



Sample Image Used



July 11, 2025
IGI Report Number **712540815**
ROUND BRILLIANT
NATURAL DIAMOND
4.67 - 4.70 X 2.95 MM
Carat Weight **0.40 CARAT**
Color Grade **K**
Clarity Grade **VS 2**
Cut Grade **EXCELLENT**
Polish **EXCELLENT**
Symmetry **EXCELLENT**
Fluorescence **NONE**
Inscription(s) **IGI 712540815**



July 11, 2025
IGI Report Number **712540815**
ROUND BRILLIANT
NATURAL DIAMOND
4.67 - 4.70 X 2.95 MM
Carat Weight **0.40 CARAT**
Color Grade **K**
Clarity Grade **VS 2**
Cut Grade **EXCELLENT**
Polish **EXCELLENT**
Symmetry **EXCELLENT**
Fluorescence **NONE**
Inscription(s) **IGI 712540815**



THIS DOCUMENT WAS PRODUCED WITH THE FOLLOWING SECURITY MEASURES: SPECIAL DOCUMENT PAPER, INK SCREENS, WATERMARK, BACKGROUND DESIGNS, HOLOGRAM AND OTHER SECURITY FEATURES NOT LISTED AND DO EXCEED DOCUMENT SECURITY INDUSTRY GUIDELINES.