



# INTERNATIONAL GEMOLOGICAL INSTITUTE

## DIAMOND REPORT

July 2, 2025  
IGI Report Number 712538950  
Description NATURAL DIAMOND  
Shape and Cutting Style ROUND BRILLIANT  
Measurements 4.83 - 4.85 X 2.94 MM

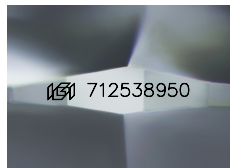
## GRADING RESULTS

Carat Weight 0.43 CARAT  
Color Grade I  
Clarity Grade VS 2  
Cut Grade EXCELLENT

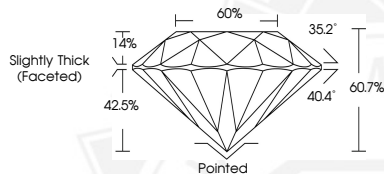
## ADDITIONAL GRADING INFORMATION

Polish EXCELLENT  
Symmetry EXCELLENT  
Fluorescence NONE  
Identification Features FEATHER  
Inscription(s) IGI 712538950

ELECTRONIC COPY



Sample Image Used



THIS DOCUMENT WAS PRODUCED WITH THE FOLLOWING SECURITY MEASURES: SPECIAL DOCUMENT PAPER, INK SCREENS, WATERMARK, BACKGROUND DESIGNS, HOLOGRAM AND OTHER SECURITY FEATURES NOT LISTED AND DO EXCEED DOCUMENT SECURITY INDUSTRY GUIDELINES.

For terms & conditions and to verify this report, please visit [www.igi.org](http://www.igi.org)



July 2, 2025  
IGI Report Number 712538950  
ROUND BRILLIANT  
NATURAL DIAMOND  
4.83 - 4.85 X 2.94 MM  
Carat Weight 0.43 CARAT  
Color Grade I  
Clarity Grade VS 2  
Cut Grade EXCELLENT  
Polish EXCELLENT  
Symmetry EXCELLENT  
Fluorescence NONE  
Inscription(s) IGI 712538950



July 2, 2025  
IGI Report Number 712538950  
ROUND BRILLIANT  
NATURAL DIAMOND  
4.83 - 4.85 X 2.94 MM  
Carat Weight 0.43 CARAT  
Color Grade I  
Clarity Grade VS 2  
Cut Grade EXCELLENT  
Polish EXCELLENT  
Symmetry EXCELLENT  
Fluorescence NONE  
Inscription(s) IGI 712538950