



# INTERNATIONAL GEMOLOGICAL INSTITUTE

ELECTRONIC COPY

## DIAMOND REPORT

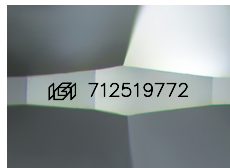
July 24, 2025  
IGI Report Number 712519772  
Description NATURAL DIAMOND  
Shape and Cutting Style ROUND BRILLIANT  
Measurements 5.11 - 5.16 X 3.21 MM

### GRADING RESULTS

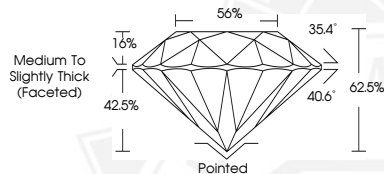
Carat Weight 0.52 CARAT  
Color Grade J  
Clarity Grade VVS 2  
Cut Grade EXCELLENT

### ADDITIONAL GRADING INFORMATION

Polish EXCELLENT  
Symmetry EXCELLENT  
Fluorescence NONE  
Identification Features CLOUD  
Inscription(s) IGI 712519772  
Comments: IDEAL CUT ROUND BRILLIANT



Sample Image Used



July 24, 2025  
IGI Report Number 712519772  
ROUND BRILLIANT  
NATURAL DIAMOND  
5.11 - 5.16 X 3.21 MM  
Carat Weight 0.52 CARAT  
Color Grade J  
Clarity Grade VVS 2  
Cut Grade EXCELLENT  
Polish EXCELLENT  
Symmetry EXCELLENT  
Fluorescence NONE  
Inscription(s) IGI 712519772  
Comments: IDEAL CUT ROUND BRILLIANT



July 24, 2025  
IGI Report Number 712519772  
ROUND BRILLIANT  
NATURAL DIAMOND  
5.11 - 5.16 X 3.21 MM  
Carat Weight 0.52 CARAT  
Color Grade J  
Clarity Grade VVS 2  
Cut Grade EXCELLENT  
Polish EXCELLENT  
Symmetry EXCELLENT  
Fluorescence NONE  
Inscription(s) IGI 712519772  
Comments: IDEAL CUT ROUND BRILLIANT



THIS DOCUMENT WAS PRODUCED WITH THE FOLLOWING SECURITY MEASURES: SPECIAL DOCUMENT PAPER, INK SCREENS, WATERMARK, BACKGROUND DESIGNS, HOLOGRAM AND OTHER SECURITY FEATURES NOT LISTED AND DO EXCEED DOCUMENT SECURITY INDUSTRY GUIDELINES.

For terms & conditions and to verify this report, please visit [www.igi.org](http://www.igi.org)