



ELECTRONIC COPY

711501862
Report verification at igi.org



June 4, 2025
IGI Report Number **711501862**
Description **NATURAL DIAMOND**
Shape and Cutting Style **ROUND BRILLIANT**
Measurements **11.48 - 11.53 X 7.30 MM**
GRADING RESULTS
Carat Weight **6.01 CARATS**
Color Grade **K**
Clarity Grade **VS 2**
Cut Grade **EXCELLENT**

DIAMOND REPORT

June 4, 2025
IGI Report Number **711501862**
Description **NATURAL DIAMOND**
Shape and Cutting Style **ROUND BRILLIANT**
Measurements **11.48 - 11.53 X 7.30 MM**

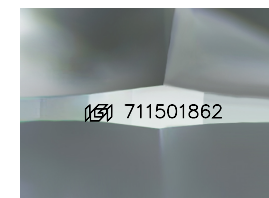
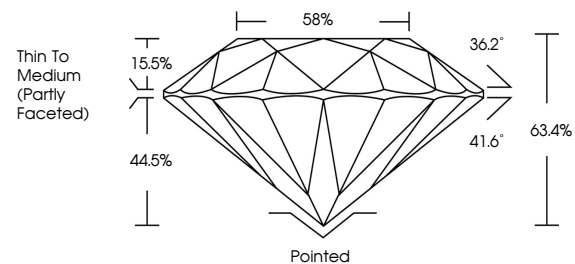
GRADING RESULTS

Carat Weight **6.01 CARATS**
Color Grade **K**
Clarity Grade **VS 2**
Cut Grade **EXCELLENT**

ADDITIONAL GRADING INFORMATION

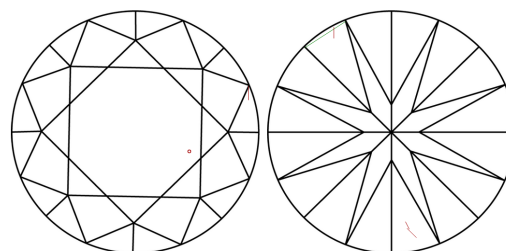
Polish **EXCELLENT**
Symmetry **EXCELLENT**
Fluorescence **NONE**
Inscription(s) **711501862**

PROPORTIONS



Sample Image Used

CLARITY CHARACTERISTICS



KEY TO SYMBOLS

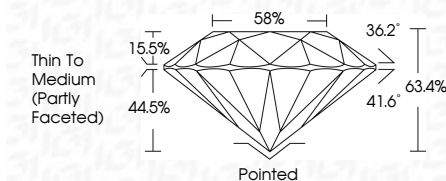
Red symbols indicate internal characteristics.
Green symbols indicate external characteristics.

COLOR

D - F	G - J	K - M	N - R	S - Z	FANCY
Colorless	Near Colorless	Slightly Tinted	Very Light Color	Light Color	

CLARITY

IF	VVS ¹⁻²	VS ¹⁻²	SI ¹⁻²	I ¹⁻³
Internally Flawless	Very Very Slightly Included	Very Slightly Included	Slightly Included	Included



ADDITIONAL GRADING INFORMATION

Polish **EXCELLENT**
Symmetry **EXCELLENT**
Fluorescence **NONE**
Inscription(s) **711501862**



IGI



June 4, 2025
IGI Report No 711501862
ROUND BRILLIANT
6.01 CARATS
K
VS 2
EXCELLENT
63.4%
58%
Thin To Medium (Partly Faceted)
Pointed
EXCELLENT
EXCELLENT
NONE
IGI 711501862