



DIAMOND REPORT

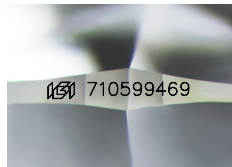
July 4, 2025
 IGI Report Number **710599469**
 Description **NATURAL DIAMOND**
 Shape and Cutting Style **ROUND BRILLIANT**
 Measurements **4.87 - 4.90 X 3.07 MM**

GRADING RESULTS

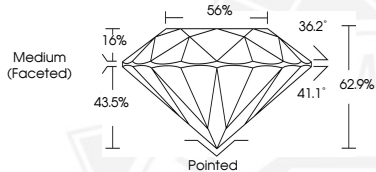
Carat Weight **0.45 CARAT**
 Color Grade **K**
 Clarity Grade **VVS 1**
 Cut Grade **EXCELLENT**

ADDITIONAL GRADING INFORMATION

Polish **EXCELLENT**
 Symmetry **EXCELLENT**
 Fluorescence **NONE**
 Identification Features **NEEDLE, CLOUD**
 Inscription(s) **IGI 710599469**



Sample Image Used



July 4, 2025
 IGI Report Number **710599469**
 ROUND BRILLIANT
 NATURAL DIAMOND
 4.87 - 4.90 X 3.07 MM
 Carat Weight **0.45 CARAT**
 Color Grade **K**
 Clarity Grade **VVS 1**
 Cut Grade **EXCELLENT**
 Polish **EXCELLENT**
 Symmetry **EXCELLENT**
 Fluorescence **NONE**
 Inscription(s) **IGI 710599469**



July 4, 2025
 IGI Report Number **710599469**
 ROUND BRILLIANT
 NATURAL DIAMOND
 4.87 - 4.90 X 3.07 MM
 Carat Weight **0.45 CARAT**
 Color Grade **K**
 Clarity Grade **VVS 1**
 Cut Grade **EXCELLENT**
 Polish **EXCELLENT**
 Symmetry **EXCELLENT**
 Fluorescence **NONE**
 Inscription(s) **IGI 710599469**



THIS DOCUMENT WAS PRODUCED WITH THE FOLLOWING SECURITY MEASURES: SPECIAL DOCUMENT PAPER, INK SCREENS, WATERMARK, BACKGROUND DESIGNS, HOLOGRAM AND OTHER SECURITY FEATURES NOT LISTED AND DO EXCEED DOCUMENT SECURITY INDUSTRY GUIDELINES.