



# INTERNATIONAL GEMOLOGICAL INSTITUTE

## DIAMOND REPORT

June 4, 2025  
IGI Report Number 710598835  
Description NATURAL DIAMOND  
Shape and Cutting Style ROUND BRILLIANT  
Measurements 4.70 - 4.77 X 2.91 MM

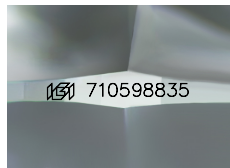
### GRADING RESULTS

Carat Weight 0.40 CARAT  
Color Grade E  
Clarity Grade SI 1  
Cut Grade EXCELLENT

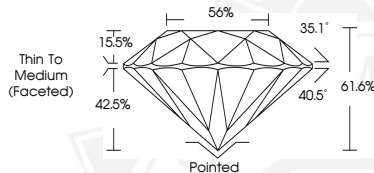
### ADDITIONAL GRADING INFORMATION

Polish EXCELLENT  
Symmetry EXCELLENT  
Fluorescence VERY SLIGHT  
Identification Features FEATHER, CRYSTAL, CLOUD  
Inscription(s) (IGI) 710598835  
Comments: IDEAL CUT ROUND BRILLIANT

ELECTRONIC COPY



Sample Image Used



June 4, 2025

IGI Report Number 710598835

ROUND BRILLIANT

NATURAL DIAMOND

4.70 - 4.77 X 2.91 MM

Carat Weight 0.40 CARAT

Color Grade E

Clarity Grade SI 1

Cut Grade EXCELLENT

Polish EXCELLENT

Symmetry EXCELLENT

Fluorescence VERY SLIGHT

Inscription(s) (IGI) 710598835

Comments: IDEAL CUT ROUND

BRILLIANT



June 4, 2025

IGI Report Number 710598835

ROUND BRILLIANT

NATURAL DIAMOND

4.70 - 4.77 X 2.91 MM

Carat Weight 0.40 CARAT

Color Grade E

Clarity Grade SI 1

Cut Grade EXCELLENT

Polish EXCELLENT

Symmetry EXCELLENT

Fluorescence VERY SLIGHT

Inscription(s) (IGI) 710598835

Comments: IDEAL CUT ROUND

BRILLIANT



THIS DOCUMENT WAS PRODUCED WITH THE FOLLOWING SECURITY MEASURES: SPECIAL DOCUMENT PAPER, INK SCREENS, WATERMARK, BACKGROUND DESIGNS, HOLOGRAM AND OTHER SECURITY FEATURES NOT LISTED AND DO EXCEED DOCUMENT SECURITY INDUSTRY GUIDELINES.

For terms & conditions and to verify this report, please visit [www.igi.org](http://www.igi.org)