



# INTERNATIONAL GEMOLOGICAL INSTITUTE

## DIAMOND REPORT

June 25, 2025

IGI Report Number

710597465

Description

NATURAL DIAMOND

Shape and Cutting Style

ROUND BRILLIANT

Measurements

5.67 - 5.70 X 3.56 MM

### GRADING RESULTS

Carat Weight

0.71 CARAT

Color Grade

L

Clarity Grade

VS 1

Cut Grade

EXCELLENT

### ADDITIONAL GRADING INFORMATION

Polish

EXCELLENT

Symmetry

EXCELLENT

Fluorescence

NONE

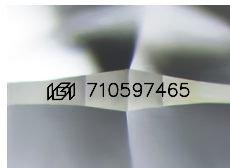
Identification Features

CRYSTAL CLOUD

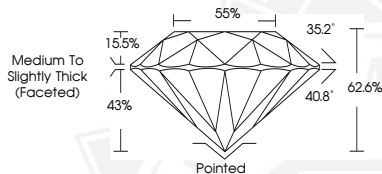
Inscription(s)

710597465

ELECTRONIC COPY



Sample Image Used



THIS DOCUMENT WAS PRODUCED WITH THE FOLLOWING SECURITY MEASURES: SPECIAL DOCUMENT PAPER, INK SCREENS, WATERMARK, BACKGROUND DESIGNS, HOLOGRAM AND OTHER SECURITY FEATURES NOT LISTED AND DO EXCEED DOCUMENT SECURITY INDUSTRY GUIDELINES.

For terms & conditions and to verify this report, please visit [www.igi.org](http://www.igi.org)



June 25, 2025

IGI Report Number 710597465

ROUND BRILLIANT

NATURAL DIAMOND

5.67 - 5.70 X 3.56 MM

Carat Weight

0.71 CARAT

Color Grade

L

Clarity Grade

VS 1

Cut Grade

EXCELLENT

Polish

EXCELLENT

Symmetry

EXCELLENT

Fluorescence

NONE

Inscription(s)

710597465



June 25, 2025

IGI Report Number 710597465

ROUND BRILLIANT

NATURAL DIAMOND

5.67 - 5.70 X 3.56 MM

Carat Weight

0.71 CARAT

Color Grade

L

Clarity Grade

VS 1

Cut Grade

EXCELLENT

Polish

EXCELLENT

Symmetry

EXCELLENT

Fluorescence

NONE

Inscription(s)

710597465