



# INTERNATIONAL GEMOLOGICAL INSTITUTE

ELECTRONIC COPY



June 18, 2025

IGI Report Number 710596230

ROUND BRILLIANT

NATURAL DIAMOND

4.92 - 4.95 X 2.91 MM

Carat Weight 0.44 CARAT

Color Grade G

Clarity Grade SI 1

Cut Grade EXCELLENT

Polish EXCELLENT

Symmetry EXCELLENT

Fluorescence VERY SLIGHT

Inscription(s) (IGI) 710596230

## DIAMOND REPORT

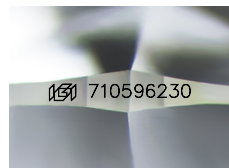
June 18, 2025  
IGI Report Number 710596230  
Description NATURAL DIAMOND  
Shape and Cutting Style ROUND BRILLIANT  
Measurements 4.92 - 4.95 X 2.91 MM

## GRADING RESULTS

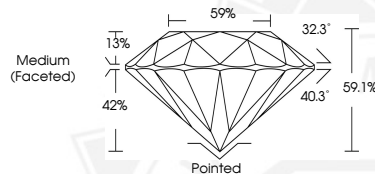
Carat Weight 0.44 CARAT  
Color Grade G  
Clarity Grade SI 1  
Cut Grade EXCELLENT

## ADDITIONAL GRADING INFORMATION

Polish EXCELLENT  
Symmetry EXCELLENT  
Fluorescence VERY SLIGHT  
Identification Features CLOUD, CRYSTAL, FEATHER  
Inscription(s) (IGI) 710596230



Sample Image Used



June 18, 2025

IGI Report Number 710596230

ROUND BRILLIANT

NATURAL DIAMOND

4.92 - 4.95 X 2.91 MM

Carat Weight 0.44 CARAT

Color Grade G

Clarity Grade SI 1

Cut Grade EXCELLENT

Polish EXCELLENT

Symmetry EXCELLENT

Fluorescence VERY SLIGHT

Inscription(s) (IGI) 710596230



THIS DOCUMENT WAS PRODUCED WITH THE FOLLOWING SECURITY MEASURES: SPECIAL DOCUMENT PAPER, INK SCREENS, WATERMARK, BACKGROUND DESIGNS, HOLOGRAM AND OTHER SECURITY FEATURES NOT LISTED AND DO EXCEED DOCUMENT SECURITY INDUSTRY GUIDELINES.

For terms & conditions and to verify this report, please visit [www.igi.org](http://www.igi.org)