



**ELECTRONIC COPY**

## DIAMOND REPORT

|                         |                       |
|-------------------------|-----------------------|
| June 5, 2025            |                       |
| IGI Report Number       | 710540428             |
| Description             | NATURAL DIAMOND       |
| Shape and Cutting Style | ROUND BRILLIANT       |
| Measurements            | 7.53 - 7.60 X 4.75 MM |

## GRADING RESULTS

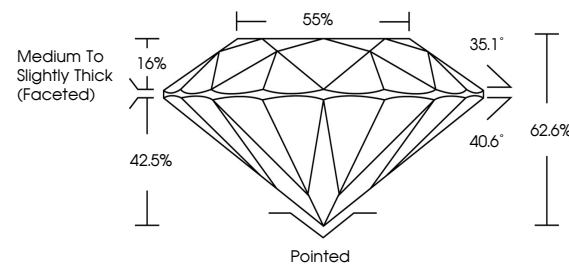
|               |                     |
|---------------|---------------------|
| Carat Weight  | 1.70 CARAT          |
| Color Grade   | G                   |
| Clarity Grade | INTERNALLY FLAWLESS |
| Cut Grade     | EXCELLENT           |

### ADDITIONAL GRADING INFORMATION

|                |               |
|----------------|---------------|
| Polish         | EXCELLENT     |
| Symmetry       | EXCELLENT     |
| Fluorescence   | NONE          |
| Inscription(s) | 131 710540428 |

710540428  
Report verification at [igi.org](http://igi.org)

## PROPORTIONS

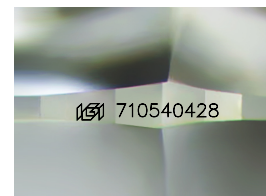


## CLARITY CHARACTERISTICS



## KEY TO SYMBOLS

Red symbols indicate internal characteristics.  
Green symbols indicate external characteristics.



Sample Image Used

**COLOR**

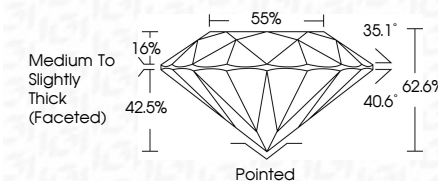
| D - F     | G - J          | K - M           | N - R            | S - Z       | FANCY |
|-----------|----------------|-----------------|------------------|-------------|-------|
| Colorless | Near Colorless | Slightly Tinted | Very Light Color | Light Color |       |

## CLARITY

| IF                  | VVS <sup>1-2</sup>          | VS <sup>1-2</sup>      | SI <sup>1-2</sup> | I <sup>1-3</sup> |
|---------------------|-----------------------------|------------------------|-------------------|------------------|
| Internally Flawless | Very Very Slightly Included | Very Slightly Included | Slightly Included | Included         |



|                         |                       |
|-------------------------|-----------------------|
| June 5, 2025            |                       |
| IGI Report Number       | 710540428             |
| Description             | NATURAL DIAMOND       |
| Shape and Cutting Style | ROUND BRILLIANT       |
| Measurements            | 7.53 - 7.60 X 4.75 MM |
| GRADING RESULTS         |                       |
| Carat Weight            | 1.70 CARAT            |
| Color Grade             | G                     |
| Clarity Grade           | INTERNALLY FLAWLESS   |
| Cut Grade               | EXCELLENT             |



### ADDITIONAL GRADING INFORMATION

|                |                |
|----------------|----------------|
| Polish         | EXCELLENT      |
| Symmetry       | EXCELLENT      |
| Fluorescence   | NONE           |
| Inscription(s) | (18) 710540428 |



© IGI 2020, International Gemological Institute

FD - 10 20

**www.igi.org**



THIS DOCUMENT WAS PRODUCED WITH THE FOLLOWING SECURITY MEASURES: SPECIAL DOCUMENT PAPER, INK SCREENS, WATERMARK, BACKGROUND DESIGNS, HOLOGRAM AND OTHER SECURITY FEATURES NOT LISTED AND DO EXCEED DOCUMENT SECURITY INDUSTRY GUIDELINES

June 5, 2025  
GI Report No 710540428  
ROUND BRILLIANT

|               |                                    |
|---------------|------------------------------------|
| Carat Weight  | 1.70 CARAT                         |
| Color Grade   | E                                  |
| Clarity Grade | IF                                 |
| Cut Grade     | EXCELLENT                          |
| Depth         | 62.6%                              |
| Table         | 55%                                |
| Girdle        | Medium to Slightly Thick (Faceted) |
| Culet         | Pointed                            |
| Polish        | EXCELLENT                          |
| Symmetry      | EXCELLENT                          |
| Fluorescence  | NONE                               |
| Measurements  | 7.58 - 7.60 X 4.75 MM              |