



DIAMOND REPORT

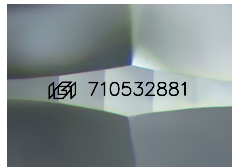
July 8, 2025
 IGI Report Number **710532881**
 Description **NATURAL DIAMOND**
 Shape and Cutting Style **ROUND BRILLIANT**
 Measurements **6.19 - 6.26 X 3.79 MM**

GRADING RESULTS

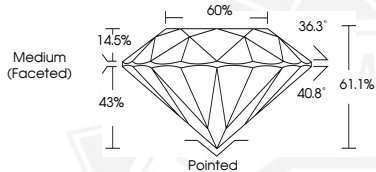
Carat Weight **0.90 CARAT**
 Color Grade **I**
 Clarity Grade **SI 2**
 Cut Grade **EXCELLENT**

ADDITIONAL GRADING INFORMATION

Polish **EXCELLENT**
 Symmetry **EXCELLENT**
 Fluorescence **NONE**
 Identification Features **CRYSTAL CLOUD**
 Inscription(s) **IGI 710532881**



Sample Image Used



July 8, 2025
 IGI Report Number **710532881**
 ROUND BRILLIANT
 NATURAL DIAMOND
 6.19 - 6.26 X 3.79 MM
 Carat Weight **0.90 CARAT**
 Color Grade **I**
 Clarity Grade **SI 2**
 Cut Grade **EXCELLENT**
 Polish **EXCELLENT**
 Symmetry **EXCELLENT**
 Fluorescence **NONE**
 Inscription(s) **IGI 710532881**



July 8, 2025
 IGI Report Number **710532881**
 ROUND BRILLIANT
 NATURAL DIAMOND
 6.19 - 6.26 X 3.79 MM
 Carat Weight **0.90 CARAT**
 Color Grade **I**
 Clarity Grade **SI 2**
 Cut Grade **EXCELLENT**
 Polish **EXCELLENT**
 Symmetry **EXCELLENT**
 Fluorescence **NONE**
 Inscription(s) **IGI 710532881**



THIS DOCUMENT WAS PRODUCED WITH THE FOLLOWING SECURITY MEASURES: SPECIAL DOCUMENT PAPER, INK SCREENS, WATERMARK, BACKGROUND DESIGNS, HOLOGRAM AND OTHER SECURITY FEATURES NOT LISTED AND DO EXCEED DOCUMENT SECURITY INDUSTRY GUIDELINES.