



# INTERNATIONAL GEMOLOGICAL INSTITUTE

## DIAMOND REPORT

July 12, 2025  
IGI Report Number 710532752  
Description NATURAL DIAMOND  
Shape and Cutting Style ROUND BRILLIANT  
Measurements 4.71 - 4.73 X 2.90 MM

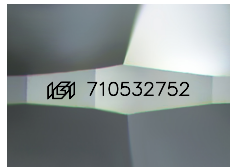
### GRADING RESULTS

Carat Weight 0.40 CARAT  
Color Grade J  
Clarity Grade SI 1  
Cut Grade EXCELLENT

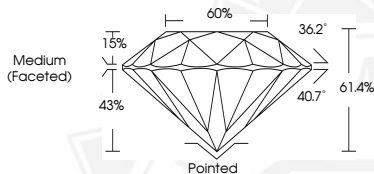
### ADDITIONAL GRADING INFORMATION

Polish EXCELLENT  
Symmetry EXCELLENT  
Fluorescence NONE  
Identification Features FEATHER, CLOUD, CRYSTAL, CAVITY  
Inscription(s) IGI 710532752  
Comments: IDEAL CUT ROUND BRILLIANT

ELECTRONIC COPY



Sample Image Used



July 12, 2025  
IGI Report Number 710532752  
ROUND BRILLIANT  
NATURAL DIAMOND  
4.71 - 4.73 X 2.90 MM  
Carat Weight 0.40 CARAT  
Color Grade J  
Clarity Grade SI 1  
Cut Grade EXCELLENT  
Polish EXCELLENT  
Symmetry EXCELLENT  
Fluorescence NONE  
Inscription(s) IGI 710532752  
Comments: IDEAL CUT ROUND BRILLIANT



July 12, 2025  
IGI Report Number 710532752  
ROUND BRILLIANT  
NATURAL DIAMOND  
4.71 - 4.73 X 2.90 MM  
Carat Weight 0.40 CARAT  
Color Grade J  
Clarity Grade SI 1  
Cut Grade EXCELLENT  
Polish EXCELLENT  
Symmetry EXCELLENT  
Fluorescence NONE  
Inscription(s) IGI 710532752  
Comments: IDEAL CUT ROUND BRILLIANT



THIS DOCUMENT WAS PRODUCED WITH THE FOLLOWING SECURITY MEASURES: SPECIAL DOCUMENT PAPER, INK SCREENS, WATERMARK, BACKGROUND DESIGNS, HOLOGRAM AND OTHER SECURITY FEATURES NOT LISTED AND DO EXCEED DOCUMENT SECURITY INDUSTRY GUIDELINES.

For terms & conditions and to verify this report, please visit [www.igi.org](http://www.igi.org)