



INTERNATIONAL GEMOLOGICAL INSTITUTE

DIAMOND REPORT

July 3, 2025
IGI Report Number **710529450**
Description **NATURAL DIAMOND**
Shape and Cutting Style **ROUND BRILLIANT**
Measurements **4.71 - 4.73 X 2.90 MM**

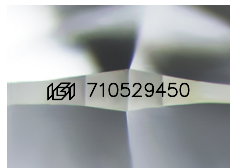
GRADING RESULTS

Carat Weight **0.40 CARAT**
Color Grade **I**
Clarity Grade **SI 2**
Cut Grade **EXCELLENT**

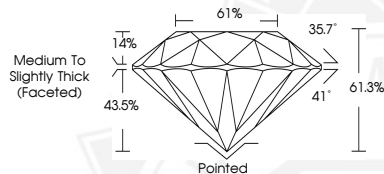
ADDITIONAL GRADING INFORMATION

Polish **EXCELLENT**
Symmetry **EXCELLENT**
Fluorescence **NONE**
Identification Features **FEATHER, CRYSTAL**
Inscription(s) **IGI 710529450**

ELECTRONIC COPY



Sample Image Used



July 3, 2025
IGI Report Number **710529450**
ROUND BRILLIANT
NATURAL DIAMOND
4.71 - 4.73 X 2.90 MM
Carat Weight **0.40 CARAT**
Color Grade **I**
Clarity Grade **SI 2**
Cut Grade **EXCELLENT**
Polish **EXCELLENT**
Symmetry **EXCELLENT**
Fluorescence **NONE**
Inscription(s) **IGI 710529450**



July 3, 2025
IGI Report Number **710529450**
ROUND BRILLIANT
NATURAL DIAMOND
4.71 - 4.73 X 2.90 MM
Carat Weight **0.40 CARAT**
Color Grade **I**
Clarity Grade **SI 2**
Cut Grade **EXCELLENT**
Polish **EXCELLENT**
Symmetry **EXCELLENT**
Fluorescence **NONE**
Inscription(s) **IGI 710529450**



THIS DOCUMENT WAS PRODUCED WITH THE FOLLOWING SECURITY MEASURES: SPECIAL DOCUMENT PAPER, INK SCREENS, WATERMARK, BACKGROUND DESIGNS, HOLOGRAM AND OTHER SECURITY FEATURES NOT LISTED AND DO EXCEED DOCUMENT SECURITY INDUSTRY GUIDELINES.

For terms & conditions and to verify this report, please visit www.igi.org