



**ELECTRONIC COPY**

## DIAMOND REPORT

October 6, 2025	
IGI Report Number	710511899
Description	NATURAL DIAMOND
Shape and Cutting Style	ROUND BRILLIANT
Measurements	7.75 - 7.86 X 5.03 MM

## GRADING RESULTS

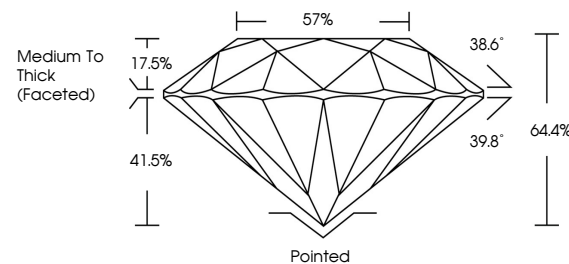
Carat Weight	2.01 CARATS
Color Grade	G
Clarity Grade	VVS 1
Cut Grade	VERY GOOD

### ADDITIONAL GRADING INFORMATION

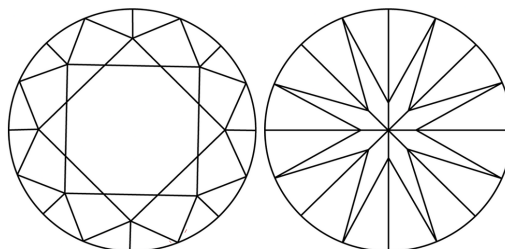
Polish	EXCELLENT
Symmetry	VERY GOOD
Fluorescence	NONE
Inscription(s)	151 710511899

710511899  
Report verification at [igi.org](http://igi.org)

## PROPORTIONS

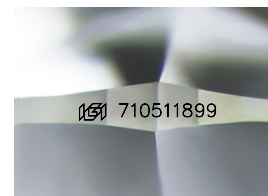


## CLARITY CHARACTERISTICS



### KEY TO SYMBOLS

Red symbols indicate internal characteristics.  
Green symbols indicate external characteristics.



Sample Image Used

**COLOR**

D - F	G - J	K - M	N - R	S - Z	FANCY
Colorless	Near Colorless	Slightly Tinted	Very Light Color	Light Color	

## CLARITY

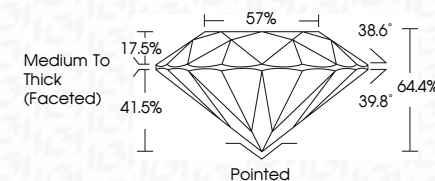
IF	VVS <sup>1-2</sup>	VS <sup>1-2</sup>	SI <sup>1-2</sup>	I <sup>1-3</sup>
Internally Flawless	Very Very Slightly Included	Very Slightly Included	Slightly Included	Included



October 6, 2025	
IGI Report Number	710511899
Description	NATURAL DIAMOND
Shape and Cutting Style	ROUND BRILLIANT
Measurements	7.75 - 7.86 X 5.03 MM

## GRADING RESULTS

Carat Weight	2.01 CARATS
Color Grade	G
Clarity Grade	VVS 1
Cut Grade	VERY GOOD



### ADDITIONAL GRADING INFORMATION

Polish	EXCELLENT
Symmetry	VERY GOOD
Fluorescence	NONE
Inscription(s)	(6) 710511899



IG



© IGI 2020, International Gemological Institute

FD - 10 20



THIS DOCUMENT WAS PRODUCED WITH THE FOLLOWING SECURITY MEASURES: SPECIAL DOCUMENT PAPER, INK SCREENS, WATERMARK, BACKGROUND DESIGNS, HOLOGRAM AND OTHER SECURITY FEATURES NOT LISTED AND DO EXCEED DOCUMENT SECURITY INDUSTRY GUIDELINES

**www.igi.org**

October 6, 2025  
GI Report No 710511899  
ROUND BRILLIANT

1.75 - 7.84 X 5.03 MM	2.01 CARATS	
Carat Weight		
Color Grade		
Clarity Grade	VVS 1	
Cut Grade	VERY GOOD	
Depth	64.4%	
Table	57%	
Girdle	Medium To Thick (Faceted)	
Culet	Pointed	
Polish	EXCELLENT	
Symmetry	VERY GOOD	
Fluorescence	NONE	
Measurements (inches)		near 7.1161.1992