



**ELECTRONIC COPY**

## DIAMOND REPORT

September 9, 2025	
IGI Report Number	710511848
Description	NATURAL DIAMOND
Shape and Cutting Style	CUT CORNERED RECTANGULAR MODIFIED BRILLIANT
Measurements	9.95 X 7.28 X 5.03 MM

## GRADING RESULTS

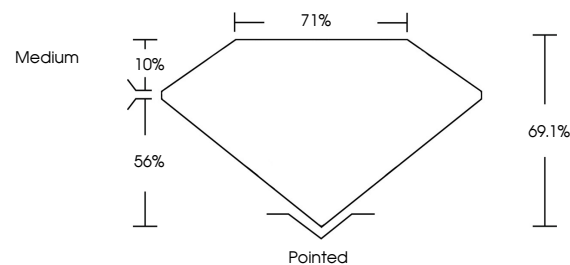
Carat Weight	3.01 CARATS
Color Grade	I
Clarity Grade	VVS 1
Cut Grade	VERY GOOD

### ADDITIONAL GRADING INFORMATION

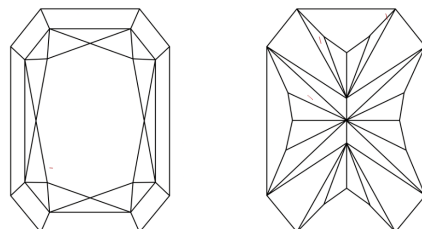
Polish	EXCELLENT
Symmetry	EXCELLENT
Fluorescence	NONE
Inscription(s)	<del>151</del> 710511848

710511848  
Report verification at [igi.org](http://igi.org)

## PROPORTIONS

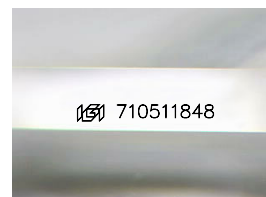


## CLARITY CHARACTERISTICS



## KEY TO SYMBOLS

Red symbols indicate internal characteristics.  
Green symbols indicate external characteristics.



Sample Image Used

**COLOR**

D - F	G - J	K - M	N - R	S - Z	FANCY
Colorless	Near Colorless	Slightly Tinted	Very Light Color	Light Color	

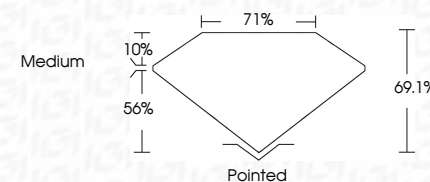
## CLARITY

IF	VVS <sup>1-2</sup>	VS <sup>1-2</sup>	SI <sup>1-2</sup>	I <sup>1-3</sup>
Internally Flawless	Very Very Slightly Included	Very Slightly Included	Slightly Included	Included

## DIAMOND REPORT



September 9, 2025	
IGI Report Number	710511848
Description	NATURAL DIAMOND
Shape and Cutting Style	CUT CORNERED RECTANGULAR MODIFIED BRILLIANT
Measurements	9.95 X 7.28 X 5.03 MM
<b>GRADING RESULTS</b>	
Carat Weight	3.01 CARATS
Color Grade	I
Clarity Grade	VVS 1
Cut Grade	VERY GOOD



### ADDITIONAL GRADING INFORMATION

Polish	EXCELLENT
Symmetry	EXCELLENT
Fluorescence	NONE
Inscription(s)	157 710511848



© IGI 2020, International Gemmological Institute

FD - 10 20

**www.igi.org**



THIS DOCUMENT WAS PRODUCED WITH THE FOLLOWING SECURITY MEASURES: SPECIAL DOCUMENT PAPER, INK SCREENS, WATERMARK, BACKGROUND DESIGNS, HOLOGRAM AND OTHER SECURITY FEATURES NOT LISTED AND DO EXCEED DOCUMENT SECURITY INDUSTRY GUIDELINES

September 9, 2026	3.01 CARATS	Color Grade	VVS 1
GI Report No 710611948		Clarity Grade	VVS 1
CT CORNERED RECT. MODIFIED BRILLIANT		Cut Grade	VERY GOOD
		Depth	66.1%
		Table	71%
		Girdle	Medium
		Culet	Pointed
		Polish	EXCELLENT
		Symmetry	EXCELLENT
		Fluorescence	NONE
			659 710611948