



ELECTRONIC COPY

708530051
Report verification at igi.org

DIAMOND REPORT

July 16, 2025
IGI Report Number **708530051**
Description **NATURAL DIAMOND**
Shape and Cutting Style **ROUND BRILLIANT**
Measurements **10.12 - 10.16 X 6.29 MM**

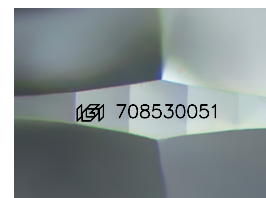
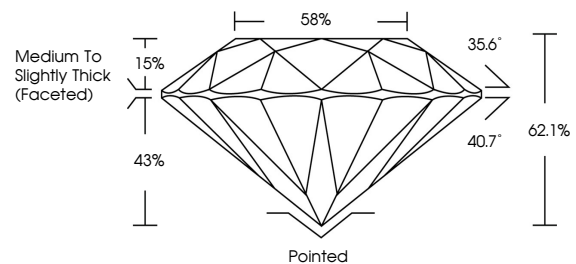
GRADING RESULTS

Carat Weight **4.06 CARATS**
Color Grade **K**
Clarity Grade **VVS 1**
Cut Grade **EXCELLENT**

ADDITIONAL GRADING INFORMATION

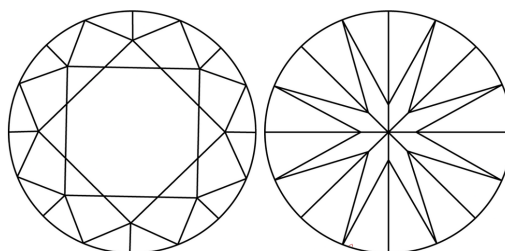
Polish **EXCELLENT**
Symmetry **EXCELLENT**
Fluorescence **NONE**
Inscription(s) **708530051**
Comments: IDEAL CUT ROUND BRILLIANT

PROPORTIONS



Sample Image Used

CLARITY CHARACTERISTICS



KEY TO SYMBOLS

Red symbols indicate internal characteristics.
Green symbols indicate external characteristics.

COLOR

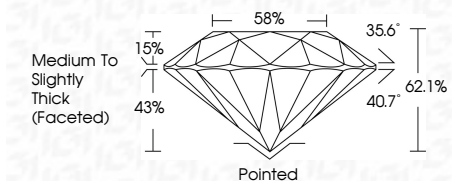
D - F	G - J	K - M	N - R	S - Z	FANCY
Colorless	Near Colorless	Slightly Tinted	Very Light Color	Light Color	

CLARITY

IF	VVS ¹⁻²	VS ¹⁻²	SI ¹⁻²	I ¹⁻³
Internally Flawless	Very Very Slightly Included	Very Slightly Included	Slightly Included	Included



July 16, 2025
IGI Report Number **708530051**
Description **NATURAL DIAMOND**
Shape and Cutting Style **ROUND BRILLIANT**
Measurements **10.12 - 10.16 X 6.29 MM**
GRADING RESULTS
Carat Weight **4.06 CARATS**
Color Grade **K**
Clarity Grade **VVS 1**
Cut Grade **EXCELLENT**



ADDITIONAL GRADING INFORMATION

Polish **EXCELLENT**
Symmetry **EXCELLENT**
Fluorescence **NONE**
Inscription(s) **708530051**
Comments: IDEAL CUT ROUND BRILLIANT



IGI



July 16, 2025
IGI Report No 708530051
ROUND BRILLIANT
10.12 - 10.16 X 6.29 MM
4.06 CARATS
K
VVS 1
EXCELLENT
62.1%
58%
Medium To Slightly Thick (Faceted)
Pointed
EXCELLENT
EXCELLENT
NONE
IGI 708530051
Comments: IDEAL CUT ROUND BRILLIANT