



INTERNATIONAL GEMOLOGICAL INSTITUTE

ELECTRONIC COPY

DIAMOND REPORT

August 8, 2025

IGI Report Number

708529301

Description

NATURAL DIAMOND

Shape and Cutting Style

ROUND BRILLIANT

Measurements

4.26 - 4.29 X 2.64 MM

GRADING RESULTS

Carat Weight

0.30 CARAT

Color Grade

G

Clarity Grade

VVS 1

Cut Grade

EXCELLENT

ADDITIONAL GRADING INFORMATION

Polish

EXCELLENT

Symmetry

EXCELLENT

Fluorescence

NONE

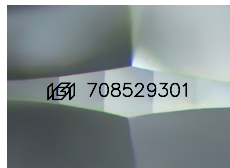
Identification Features

CLOUD

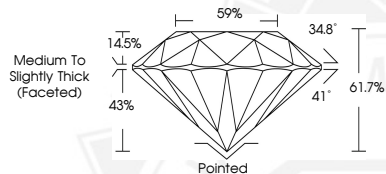
Inscription(s)

IGI 708529301

Comments: IDEAL CUT ROUND BRILLIANT



Sample Image Used



August 8, 2025

IGI Report Number 708529301

ROUND BRILLIANT

NATURAL DIAMOND

4.26 - 4.29 X 2.64 MM

Carat Weight 0.30 CARAT

Color Grade G

Clarity Grade VVS 1

Cut Grade EXCELLENT

Polish EXCELLENT

Symmetry EXCELLENT

Fluorescence NONE

Inscription(s) IGI 708529301

Comments: IDEAL CUT ROUND

BRILLIANT



August 8, 2025

IGI Report Number 708529301

ROUND BRILLIANT

NATURAL DIAMOND

4.26 - 4.29 X 2.64 MM

Carat Weight 0.30 CARAT

Color Grade G

Clarity Grade VVS 1

Cut Grade EXCELLENT

Polish EXCELLENT

Symmetry EXCELLENT

Fluorescence NONE

Inscription(s) IGI 708529301

Comments: IDEAL CUT ROUND

BRILLIANT



THIS DOCUMENT WAS PRODUCED WITH THE FOLLOWING SECURITY MEASURES: SPECIAL DOCUMENT PAPER, INK SCREENS, WATERMARK, BACKGROUND DESIGNS, HOLOGRAM AND OTHER SECURITY FEATURES NOT LISTED AND DO EXCEED DOCUMENT SECURITY INDUSTRY GUIDELINES.

For terms & conditions and to verify this report, please visit www.igi.org